

NCCU FACT BOOK

A STATISTICAL ABSTRACT OF
SIGNIFICANT CHARACTERISTICS
OF NORTH CAROLINA
CENTRAL UNIVERSITY 1981-82

Office of Institutional Studies
North Carolina Central University
Durham, North Carolina 27707

MAY 1982

1⁴ Q Σ 6 Σ 4 8 μ .01 N ST
X² Z 6 Z R Z Q Σ X Y P 5 R
T 1 4 Q Σ 6 Σ 4 8 μ .01 N ST
X² Z 6 Z R Z Q Σ X Y P 5 R
NF σ⁶ M⁴ T

NCCU FACT BOOK

STATISTICAL ABSTRACT OF SIGNIFICANT CHARACTERISTICS

OF NORTH CAROLINA CENTRAL UNIVERSITY

1981 - 82

NATHANIEL L. FELDER
LINDA K. PRATT

OFFICE OF RESEARCH, EVALUATION AND PLANNING
NORTH CAROLINA CENTRAL UNIVERSITY
DURHAM, NORTH CAROLINA 27707

MAY, 1982

PREFACE

The 1981-82 publication is an update of the Fall 1980 publication by the Office of Research, Evaluation, and Planning for many years. The format of this volume is very similar to the format established in 1978 when the majority of the tables were revised and the entire process was computerized.

CONTENTS

This year, as in the past, it has been made to provide accurate, useful data to be used in the planning process. A special effort has been made to have the data contained in tables and presented with the data submitted to external agencies.

	<u>Page</u>
Preface and Acknowledgements	i
General Background and Organization	1
Student Data	
Enrollment	28
Admissions	39
Degrees Conferred	48
Financial Aid	55
Faculty and Staff	
All Instructional Faculty	60
Full-Time Instructional Faculty	74
Faculty and Staff	95
Resources	103
Appendix	109

CONTENTS

	<u>Page</u>
Preface and Acknowledgements	i
General Background and Organization	1
Student Data	
Enrollment	28
Admissions	39
Degrees Conferred	48
Financial Aid	55
Faculty and Staff	
All Instructional Faculty	60
Full-Time Instructional Faculty	74
Faculty and Staff	95
Resources	103
Appendix	109

PREFACE

The 1981-82 publication is an update of the Fact Book published by the Office of Research, Evaluation, and Planning for many years. The format of this volume is very similar to the format established in 1979 when the majority of the tables were revised and the entire process was computerized.

This year, as in the past, an effort has been made to provide accurate, useful data to be used in the planning process. A special effort has been made to make the data consistent from table to table and congruent with the data submitted to external agencies.

I would like to express my appreciation to those offices and individuals around campus for their support and cooperation in providing and checking data. I would also like to thank Mr. George Bowie who continued to train our staff in the operation of the computer program that generated the Fact Book tables; Ms. Bonnie Saunders who updated the majority of the tables and who checked and rechecked the data in those tables for accuracy; and Ms. Joan Wells who printed tables, typed, proofread and provided invaluable general assistance. I would also like to thank my co-author, Dr. Nathaniel Felder. Dr. Felder came into our office and into the Fact Book update process in January of 1982 and has been indispensable in supervising the process since that time.

May, 1982

Linda K. Pratt
Director, Research,
Evaluation and Planning

GENERAL BACKGROUND AND ORGANIZATION

	<u>Page</u>
Non-Discrimination State of Policy	2
General Background and Organization	3
Academic Organization	12
Degree Programs and Program Tracks	13
The University of North Carolina	
Board of Governors, 1981-1982	19
Officers of General Administration, 1981-82	20
North Carolina Central University	
Board of Trustees, 1981-82	23
NCCU Organization Chart	24
Officers and Administrative Staff, 1981-82	25

NON-DISCRIMINATION STATEMENT OF POLICY

NORTH CAROLINA CENTRAL UNIVERSITY is dedicated to equality of opportunity within its community. Accordingly, NORTH CAROLINA CENTRAL UNIVERSITY does not practice or condone discrimination, in any form, against students, employees, or applicants on the grounds of race, color, national origin, religion, sex, age, or handicap. NORTH CAROLINA CENTRAL UNIVERSITY commits itself to positive action to secure equal opportunity regardless of those characteristics.

NORTH CAROLINA CENTRAL UNIVERSITY supports the protections available to members of its community under all applicable Federal laws, including Titles VI and VII of the Civil Rights Act of 1964, Title IX of the Education Amendments of 1972, Sections 799A and 845 of the Public Health Service Act, the Equal Pay and Age Discrimination Acts, the Rehabilitation Act of 1973, and Executive Order 11246. For information concerning these provisions, contact: Director of Affirmative Action, Room 201, Administration Building, North Carolina Central University, Durham, North Carolina 27707, Telephone 683-6254 or 683-6472.

PURPOSE OF THE INSTITUTION

North Carolina Central University offers undergraduate instruction in the arts and sciences and in business and education. In addition, it conducts a number of graduate programs leading to the master's degree in these areas. The University offers post-graduate, first-degree professional programs through its Schools of Law and Library Science.

The University's authority to offer instruction and to confer degrees derives from The University of North Carolina through its Board of Governors, under the legislation which created the unified University of North Carolina on October 30, 1971.

Through the undergraduate program (and to some extent through the graduate and professional programs) attention is directed to the achievement of the following:

1. Development of perspective and intellectual strength for the endeavors of a lifetime.
2. Acquaintance with our cultural heritage as a background for understanding and relating to the existing social order.
3. Provision of a climate for high-quality learning with special emphasis on education for knowledge, intelligent, responsive participation in the home, the community, and a career.
4. A liberal education with a number of opportunities in specialized education so that students are prepared to pursue various professional careers with confidence and competence.
5. Recognition of the need for continuous learning throughout one's life in order to be effective, responsible citizens in a rapidly changing society.

HISTORICAL SKETCH

North Carolina Central University, the first state-supported liberal arts institution for blacks in the United States, was founded by its late President, Dr. James E. Shepard. From the beginning, its purpose has been the development in young men and women of that fine character and sound academic training requisite for real service to the nation. To this end, the training of all students has been entrusted to the most capable teachers available.

Originally known as the National Religious Training School and Chautauqua, the university was first chartered in 1909 as a private institution and opened to students on July 10, 1910. The institution's early years were characterized by wealth of enthusiasm and high endeavor, but not of money. Private donations and student fees constituted the total financial support of the school, and the heavy burden of collecting funds rested on one man, the President.

In 1915, the school was sold and reorganized, then becoming the National Training School. During this period, Mrs. Russell Sage of New York was a generous benefactor of the school.

The General Assembly of North Carolina appropriated funds for the purchase and maintenance of the school in 1923; thus in that year it became a publicly-supported institution, and was named Durham State Normal School. Two years later the Legislature converted it into the North Carolina College for Negroes, dedicating it to the offering of liberal arts education and the preparation of teachers and principals for secondary schools.

At its 1927 session, the General Assembly began a program of expansion of the college plant to conform to the needs of an enlarged academic program. The sincere interest of the Honorable Angus W. McLean, then Governor of North Carolina, and his belief in the institution aided greatly in the promotion of this program. State appropriations were supplemented by a generous gift from the late B.N. Duke, and by contributions from citizens of Durham.

The first four-year college class was graduated in 1929. The alumni register of the institution now bears the names of distinguished citizens of the nation, as well as of other worthy individuals who daily contribute significantly to the leadership and development of their local communities.

The University was accredited by the Southern Association of Colleges and Secondary Schools as an "A" class institution in 1937 and was admitted to membership in this association in 1957. It has also been approved by the Association of American Universities and the National Council for the Accreditation of Teacher Education and holds an "A" rating with the American Medical Association and the North Carolina State Department of Public Instruction.

From the 1930's until the beginning of World War II, federal grants and state appropriations enabled the university to begin a new program of physical expansion and improvement of educational facilities.

The General Assembly of 1939 authorized the establishment of graduate work in liberal arts and the professions. Pursuant thereto graduate courses in the Arts and Sciences were first offered in that same year; the School of Law began operation in 1940, and the School of Library Science was established in 1941.

In 1947, the State Legislature changed the name of the institution to the North Carolina College at Durham.

On October 6, 1947, the college suffered irreparable loss through the death of its founder and President, Dr. James E. Shepard. The Board of Trustees appointed an Interim Committee, consisting of Dr. Albert E. Manley, Dean of the College of Arts and Sciences, Miss Ruth G. Rush, Dean of Women, and Dr. Albert L. Turner, Dean of the School of Law, which administered the affairs of the institution until the election of the second president.

Dr. Alfonso Elder was elected President of the institution on January 20, 1948. At the time of his election Dr. Elder was serving as head of the Graduate Department of Education and had formerly been Dean of the College of Arts and Sciences. Dr. Elder retired September 1, 1963.

Dr. Samuel P. Massie was elected as the third President of the College on August 9, 1963, and assumed the office on September 1, 1963. Dr. Massie came to the institution from Washington, D.C., where he was Associate Program Director for Undergraduate Science Education of the National Science Foundation and Professor and Chairman of the Department of Pharmaceutical Chemistry at Howard University. He resigned on February 1, 1966.

The Board of Trustees appointed an Interim Committee, consisting of William Jones, Business Manager, Dr. Helen G. Edmonds, Graduate Dean, and Dr. William H. Brown, Professor of Education, to administer the affairs of the institution until the fourth president took office.

Dr. Albert N. Whiting was named fourth president of the institution on July 20, 1966. He came to North Carolina College from Baltimore, Maryland, where he had served for several years as Dean of Faculty of Morgan State College. Dr. Whiting assumed the office on July 1, 1967.

In 1969, the State Legislature again changed the name of the institution to North Carolina Central University. On July 1, 1972, North Carolina Central University became a constituent institution of the University of North Carolina.

MISSION

With a strong base of state support which grows each year, NCCU continues to build its own strength as it works toward the effective realization of its mission and goals. The primary mission of North Carolina Central University is to educate men and women who, in their private and professional lives, will have the potential to advance the general welfare of all the people of the State.

The University subscribes to the following beliefs: that its educational pattern must be shaped to prepare its students for participation, both professionally and lay, in an unsheltered, integrated society; that national performance norms, in all areas, must be the guide and determination measure for its graduates; and that the objectives should be the maximum possible attainment above these norms.

Acknowledging the fact that for the foreseeable future, the majority of its students will represent the underprivileged, often poorly prepared, non-white, and low income youth of the State, the University is committed to developing the kinds of academic programs and non-academic activities which will enable students to become productive members of society. Implicit in this resolve is the recognition of a need to make subsidiary, special and determined efforts to nurture a sense of pride and self-esteem with regard to ethnic and social identification.

In the broad outline, North Carolina Central University is dedicated to the proposition that it must continually seek to become a "realized force" in local community, State and regional developments and a cultural resource of recognized significance in the eyes of all people. Finally, the Institution cherishes the hope that in the not-too-distant future, it will be increasingly viewed, not in the image of a predominantly black institution, but rather as a dynamic, innovative University with a program relevantly responsive to the needs of the State of North Carolina and the southern region in the service of all its people. Toward these ends, the following general goals have been proposed as guidelines for even more specific aims:

NCCU aims to be an institution that has

1. a strong curriculum geared to the needs of its students so that they may successfully contribute to the world they will enter.
2. a strong faculty, talented and innovative, dedicated to the students and the aims of the institution and the state system.
3. an effective system of services, both academic and non-academic, for students and faculty.

4. a heterogeneous student body, which, though remaining predominantly black, will contain a large component of other races to provide a cross-fertilization of ideas, values, aspirations and life-styles.
5. a strong management team that can most effectively make use of a structure that promotes effective participation of faculty and students and service personnel in the governance of the University.

In his inaugural address on April 27, 1968, the present Chancellor, Dr. Albert N. Whiting, presented a seven-point set of goals for higher education:

1. We should preserve student curiosity, heighten intellectual aspirations, reduce the impersonal quality of college life, and prevail against mere mechanical instruction.
2. We should make every effort to encourage a physical environment and social climate conducive to educational, moral cultural, and esthetic growth.
3. We should reward teaching and positive productive relationships with students on a basis equivalent to the rewards for research and professional publications. Particularly, should this be true at a liberal arts college.
4. We should give concerted attention to the creation of a campus community whose dominant axis of interest is intellectual discovery rather than early specialization and professionalization.
5. We should make the pursuit of intellectual discovery a partnership between junior and senior participants; therefore, we should involve students in shaping the educational environment in which they work, live, and grow.
6. We should extend our teaching beyond the accumulation of academic knowledge to give the students growth in maturity and judgement, so that they can see the relevance of their knowledge to the quality of their own lives and that life in relation to the kinds of judgements they make.
7. We should strive vigorously to develop programs and teaching techniques geared not only for the privileged and the intellectual elite, but for those of less developed intelligence and less advantage. The realities of our society require higher education for the masses. Colleges, therefore, must re-orient their goals and programs to this fact. If they engage students' feelings and intellect...then, hopefully, learning will result in the desired behavioral change.

HIGH PRIORITY GOALS
ACCORDING TO PROGRAM CLASSIFICATION STRUCTURE

The Planning and Budgeting Council of North Carolina Central University has reviewed and revised the goals of the institution and classified them according to a structure consistent with the reporting requirements for the budget. The goals marked with an asterisk (*) have been chosen by the Academic and the Non-academic Planning and Budgeting Committees as those to be emphasized during the 1983-1985 budget biennium.

I. INSTITUTIONAL ADMINISTRATION PROGRAM (6.0)

To assure the organization effectiveness and continuity of NCCU by (1) providing for planning and executive direction, (2) providing for administrative and logistical services, (3) enhancing relationships with NCCU's constituencies, (4) providing services and conveniences for the employees of NCCU, and (5) recruiting and admitting students to the NCCU educational program by accomplishing the following objectives:

- *1. : To improve the recruitment system and to offer scholarships and financial aid based on financial need as well as on academic excellence.
- 2. A&E#2: To establish a reputation that would be more competitive with predominantly white institutions that are currently attracting the caliber of students that we wish to enroll, enabling us to be more competitive in our recruitment efforts.
- *5. A #2: To acquire the resources necessary to support teaching, research, and learning, both directly through the administration's own efforts, and indirectly through provision of information on funding sources and other matters to faculty and students.
- 6. F #1: To encourage excellence in teaching.
- 7. F #2: To attract and retain highly qualified faculty.
- 8. A #8: To develop and maintain a planning and budgeting process that will ensure that accountability, efficiency and effectiveness are evident in the implementation of the goals and objectives of the University.
- 11. SA #1: To implement an improved registration system.
- 13. LR #2: To support and strengthen the academic, research and cultural programs of the University by continuing the efforts of faculty and staff to increase and improve resource development.
- *16. ST #8: To give priority to the employment of additional staff personnel in understaffed areas.

II. INSTRUCTION PROGRAM (1.0)

To elicit, through an organized instructional program, some measure of educational change in students of NCCU. Educational change includes (1) the acquisition or improved understanding of some portion of the body of knowledge, (2) the adoption of new or different attitudes, and (3) the acquisition or increased mastery of a skill or set of skills.

3. I #1A: To assure the mastery of basic communication skills and to provide for their continuous reinforcement throughout the University. (p. 32 #1)

III. STUDENT FINANCIAL SUPPORT PROGRAM (8.0)

To provide financial assistance to students in the form of outright grants, trainee stipends, and prizes, awarded by and/or administered through NCCU.

4. SA #7: To broaden a scholarship program designed to attract students of high academic potential without concern for financial need.
17. : To supplement financial aid funds available from federal and state sources for students with demonstrated financial needs.

IV. ACADEMIC SUPPORT PROGRAM (4.0)

To support directly one or more of the three primary programs (Instruction, Research, Public Service) by carrying out activities (1) related to the preservation, maintenance and display of both the stock of knowledge and educational material, (2) that directly contribute to the way in which instruction is delivered or research is conducted, (3) directly related to the administration of academic programs, and (4) related to the professional development of academic personnel.

9. I #2B: To assure that all accrediting agency criteria and appropriate professional group standards are met by the departments and schools of the University. (p. 32 #4)
12. AT #2: To continue to strive for high levels of professional training in law, nursing, business, education, and library science.
14. AT #1: To maintain the quality and strengthen, as necessary, programs at the master's level.

V. PHYSICAL PLANT OPERATIONS PROGRAM (7.0)

To maintain existing grounds and facilities, provide utility services, and plan and design future plant expansions and modifications.

10. SP #3: To make every effort to encourage a physical environment conducive to educational, moral, cultural, and aesthetic growth.

VI. STUDENT SERVICE PROGRAM (5.0)

To contribute to the emotional and physical well-being of the students, as well as to their intellectual, cultural, and social development outside the context of the formal Instruction Program.

- 15. C #1: To develop a comprehensive counseling program (e.g., medical, academic, vocational, social, emotional, and financial).

Association of American Universities
American Bar Association
American Library Association
National Council for Accreditation of Teacher Education
The Advertising Service, National League for Testing
State Councils of Local Examiners
North Carolina Board of Nursing

The National Association of Colleges and Schools
American Association of Colleges for Teacher Education
American Council on Education
Council of State Agencies, Department of Baccalaureate and
Higher Degree Programs
The Council of Graduate Schools in the United States
National Association of Summer Session
National Association of Collegiate Schools of Business

Journal of North Carolina Central University, 1982 - 1983

ACCREDITATION

North Carolina Central University is accredited by the Southern Association of Colleges and Schools, the North Carolina State Department of Public Instruction and the American Medical Association.

It is approved as a whole or through its components by:

Association of American Universities
American Bar Association
American Library Association
National Council for Accreditation of Teacher Education
The Accrediting Service, National League for Nursing
North Carolina Board of Legal Examiners
North Carolina Board of Nursing

It holds membership in:

The Southern Association of Colleges and Schools
American Association of Colleges for Teacher Education
American Council on Education
Council of Member Agencies, Department of Baccalaureate and
Higher Degree Programs
The Council of Graduate Schools in the United States
National Association of Summer Session
American Assembly of Collegiate Schools of Business

Source:

Bulletin of North Carolina Central University, 1980 - 1982

ACADEMIC ORGANIZATION

North Carolina Central University is classified as a comprehensive post-secondary institution. It offers programs at the baccalaureate, master's and first-professional levels. Its instructional programs are organized into these colleges and professional schools: Undergraduate College of Arts and Sciences, Graduate School of Arts and Sciences, School of Business, School of Law, and School of Library Science. Its authorized degree programs are listed on the following pages.

DEGREE PROGRAMS AND PROGRAM TRACKS

North Carolina Central University is authorized to offer degree programs in 14 discipline divisions at the baccalaureate, master's and professional levels. The programs and program tracks under each of these divisions with program titles, degrees, and tracks are as follows:

HEGIS Code	Division and Program Title	Level	Degree and Program Track
0400	<u>BIOLOGICAL SCIENCES</u>		
0401	Biology, General	Bachelor's	B.S., Biology B.S., Biology, Secondary Education
0401	Biology, General	Master's	M.S., Biology M.S., Biology, Secondary Education
0500	<u>BUSINESS AND MANAGEMENT</u>		
0502	Accounting	Bachelor's	B.B.A., Accounting
0506	Business Management and Administration	Bachelors'	B.B.A., Business Administration
0506	Business Management and Administration	Master's	M.B.A., Business Administration
0517	Business Economics	Bachelor's	B.B.A., Economics B.A., Economics
0800	<u>EDUCATION</u>		
0802	Elementary Education, General	Bachelor's	B.S., Elementary Education, Intermediate (4-9) B.A., Early Childhood Education (K-3)
0802	Elementary Education, General	Master's	M.A., Elementary Education (Early Childhood and Intermediate) M.Ed., Elementary Education (Early Childhood and Intermediate)

DEGREE PROGRAMS AND PROGRAM TRACKS (Continued)

HEGIS Code	Division and Program Title	Level	Degree and Program Track
0800	<u>EDUCATION</u> (Continued)		
0808	Special Education, General	Master's	M.Ed., Education of Mentally Retarded M.Ed., Education of the Emotionally Disturbed
0815	Speech Correction	Master's	M.Ed., Speech and Hearing Education
0826	Student Personnel (Counseling and Guidance)	Master's	M.A., Student Personnel (Counseling and Guidance) M.A., Career Counseling and Placement M.A., Agency Counseling
0835	Physical Education	Bachelor's	B.S., Physical Education
0835	Physical Education	Master's	M.A., Physical Education M.S., Physical Education, Secondary Education
0837	Health Education (including Family Life Education)	Bachelor's	B.S., Health Education B.S., Community Health Education
0838	Business, Commerce, and Distributive	Bachelor's	B.S.C., Business Education, Secondary Basic B.S.C., Business Education, Secondary Comprehensive
0838	Business, Commerce, and Distributive Education	Master's	M.S., Business Education, Secondary
0893	Educational Administration and Supervision	Master's	M.A., Educational Administration Supervision
0895	Health and Physical Education	Bachelor's	B.S., Physical Education
0897	Educational Media	Master's	M.A., Instructional Media

DEGREE PROGRAMS AND PROGRAM TRACKS (Continued)

HEGIS Code	Division and Program Title	Level	Degree and Program Track
1000	<u>FINE AND APPLIED ARTS</u>		
1002	Art (Painting, Drawing, Sculpture)	Bachelor's	B. A., Art, General B. A., Visual Communications B. A., Art, Fine Art B. A., Art: Art Education
1005	Music (Liberal Arts Program)	Bachelor's	B. A., Music (Liberal Arts Program) B. A., Music: Music Education
1005	Music (Liberal Arts Program)	Master's	M. A., Music (Liberal Arts Program) M. A., Music Education, K-12
1007	Dramatic Arts	Bachelor's	B. A., Dramatic Arts B. A., Dramatic Arts, Secondary Education B. A., Theatre Arts Education, K-12
1100	<u>FOREIGN LANGUAGES</u>		
1102	French	Bachelor's	B. A., French B. A., French, Secondary Education
1102	French	Master's	M. A., French M. A., French, Secondary Education
1103	German	Bachelor's	B. A., German B. A., German, Secondary Education
1105	Spanish	Bachelor's	B. A., Spanish B. A., Spanish, Secondary Education
1200	<u>HEALTH PROFESSIONS</u>		
1203	Nursing	Bachelor's	B. S. N., Nursing

DEGREE PROGRAMS AND PROGRAM TRACKS (Continued)

HEGIS Code	Division and Program Title	Level	Degree and Program Track
1300	<u>HOME ECONOMICS</u>		
1301	Home Economics, General	Bachelor's	B. S. H. E., Home Economics, General B. S. H. E., Home Economics, Secondary Education
1301	Home Economics, General	Master's	M. S., Home Economics Education
1303	Clothing and Textiles	Bachelor's	B. S. H. E., Clothing and Textiles
1306	Foods and Nutrition (including Dietetics)	Bachelor's	B. S. H. E., Foods and Nutrition (including Dietetics)
1400	<u>LAW</u>		
1401	Law, General	Professional	L. L. B., Law J. D., Law
1500	<u>LETTERS</u>		
1501	English, General	Bachelor's	B. A., English B. A., English, Secondary Education
1501	English, General	Master's	M. A., English
1509	Philosophy	Bachelor's	B. A., Philosophy
1600	<u>LIBRARY SCIENCE</u>		
1601	Library Science, General	Master's	M. L. S., Library Science
1700	<u>MATHEMATICS</u>		
1701	Mathematics, General	Bachelor's	B. S., Mathematics B. S., Mathematics, Secondary Education

DEGREE PROGRAMS AND PROGRAM TRACKS (Continued)

HEGIS Code	Division and Program Title	Level	Degree and Program Track
1700	<u>MATHEMATICS</u> (Continued)		
1701	Mathematics, General	Master's	M. S., Mathematics M. S., Mathematics, Secondary Education
1900	<u>PHYSICAL SCIENCES</u>		
1902	Physics, General (excluding Biophysics)	Bachelor's	B. S., Physics B. S., Physics, Secondary Education
1905	Chemistry, General (excluding Biochemistry)	Bachelor's	B. S., Chemistry B. S., Chemistry, Secondary Education
1905	Chemistry, General (excluding Biochemistry)	Master's	M. S., Chemistry M. S., Chemistry, Secondary Education
2000	<u>PSYCHOLOGY</u>		
2001	Psychology, General	Bachelor's	B. A., Psychology
2001	Psychology, General	Master's	M. A., Psychology
2100	<u>PUBLIC AFFAIRS AND SERVICES</u>		
2103	Parks and Recreation Management	Bachelor's	B. S., Recreation Administration
2103	Parks and Recreation Management	Master's	M. S., Recreation Administration
2105	Law Enforcement and Corrections	Bachelor's	B. A., Political Science: Criminal Justice
2200	<u>SOCIAL SCIENCES</u>		
2201	Social Sciences, General	Bachelor's	B. A., Social Sciences

DEGREE PROGRAMS AND PROGRAM TRACKS (Continued)

HEGIS Code	Division and Program Title	Level	Degree and Program Track
2200	<u>SOCIAL SCIENCES</u> (Continued)		
2205	History	Bachelor's	B.A., History B.A., History, Secondary Education
2205	History	Master's	M.A., History M.A., History, Secondary Education
2206	Geography	Bachelor's	B.S., Geography
2207	Political Science and Government	Bachelor's	B.A., Political Science B.S., Political Science
2208	Sociology	Bachelor's	B.A., Sociology
2208	Sociology	Master's	M.A., Sociology
2211	Afro-American (Black Culture) Studies	Bachelors'	B.A., Black Studies

Source:

Academic Program Inventory, The University of North Carolina, July 1978.

THE UNIVERSITY OF NORTH CAROLINA

BOARD OF GOVERNORS

John R. Jordan, Jr.
Mrs. Hugh Morton
Louis T. Randolph

Chairperson
Vice Chairperson
Secretary

Class of 1983

Irwin Belk
Wayne A. Corpening
Daniel C. Gunter, Jr.
Mrs. Howard Holderness
John R. Jordan, Jr.
J. Aaron Prevost
Louis T. Randolph
Harley F. Shuford, Jr.

Assistant to the President
Charlotte
Winston-Salem
Gastonia
Greensboro
Raleigh
Hazelwood
Washington
Hickory

Class of 1985

Furman P. Bodenheimer
Laurence A. Cobb
John Edwin Davenport
Charles Z. Flack, Jr.
James E. Holmes
Mrs. John F. McNair, III
Reginald F. McCoy
Maceo A. Sloan

Assistant to the President
for Relations with
Assembly, Private
and University
Community Col
Raleigh
Charlotte
Nashville
Forest City
Winston-Salem
Winston-Salem
Laurinburg
Durham

Class of 1987

B. Irvin Boyle
William A. Dees, Jr.
Jacob H. Froelich, Jr.
The Honorable James E. Holshouser
William A. Johnson
Robert L. Jones
E. B. Turner

Special Assistants to the President
Secretary of the
Assistant Secretary of the
Director, The University of North Carolina
Center for Public
Charlotte
Goldsboro
High Point
Southern Pines
Lillington
Raleigh
Lumberton

Class of 1989

Mrs. Geneva J. Bowe
Phillip G. Carson
Walter R. Davis
R. Phillip Haire
Mrs. Hugh Morton
Asa T. Spaulding, Jr.
David J. Whichard, II
William K. Woltz

Vice President
for Academic
and Senior Vice
Associate Vice President
Assistant Vice President
Director, North Carolina
Educational Computing Service
Murfreesboro
Asheville
Midland
Sylva
Linville
Durham
Greenville
Mount Airy

THE UNIVERSITY OF NORTH CAROLINA
OFFICERS OF GENERAL ADMINISTRATION

1981-82

William C. Friday	Assistant Vice President
Zona C. Norwood	Assistant to the President
R. D. McMillan, Jr.	Assistant to the President for Governmental Affairs
Richard H. Robinson, Jr.	Assistant to the President for Legal Affairs
James L. Jenkins, Jr.	Assistant to the President for Public Information
Arnold K. King	Assistant to the President for Relations with Faculty Assembly, Private Colleges and Universities and the Community College System
George E. Bair	Assistant to the President for University Telecommunications
David N. Edwards, Jr. Jeffrey H. Orleans	Special Assistants to the President
John P. Kennedy, Jr.	Secretary of the University
Edward W. Crowe	Assistant Secretary of the University
John W. Dunlop	Director, The University of North Carolina Center for Public Television

ACADEMIC AFFAIRS

Raymond H. Dawson	Vice President for Academic Affairs and Senior Vice President
Donald J. Stedman Robert W. Williams, Jr.	Associate Vice Presidents
Arthur Padilla	Assistant Vice President
Louis T. Parker, Jr.	Director, North Carolina Educational Computing Service

FINANCE

L. Felix Joyner	Vice President
Hugh Buchanan	Associate Vice Presidents
Kennis Grogan	Associate Vice President
Ellen H. Kepley	Assistant Vice Presidents
A. P. Winfrey	
J. Sibley Dorton, Jr.	Assistant Vice President for Finance and University Property Officer
Leon M. Ennis, Jr.	Finance Officer
Milton H. Gupton	Services Officer

PLANNING

Roy Carroll	Vice President
Gary T. Barnes	Assistant Vice Presidents
E. Bruce Sigmon, Jr.	
Robert F. Hill, Jr.	Director of Information Services
Linda Balfour	Coordinator of Data Collection
Kay Duffy	Coordinator of Special Studies

RESEARCH AND PUBLIC SERVICE PROGRAMS

E. Walton Jones	Vice President
Charles L. Wheeler	Assistant Vice President for Research and Public Service Programs and Director North Carolina State Commission on Higher Education Facilities
E. Carole Tyler	Director, Educational Information Center
Willard Babcock	Director, Institute for Transportation, Research and Education
Betty Sanders	Coordinator, Title I Programs

STUDENT SERVICES AND SPECIAL PROGRAMS

Cleon F. Thompson, Jr.

Vice President

John R. Corey

Associate Vice President

Paul B. Marion

Assistant Vice President

Stan C. Broadway

Executive Director
State Education Assistance Authority

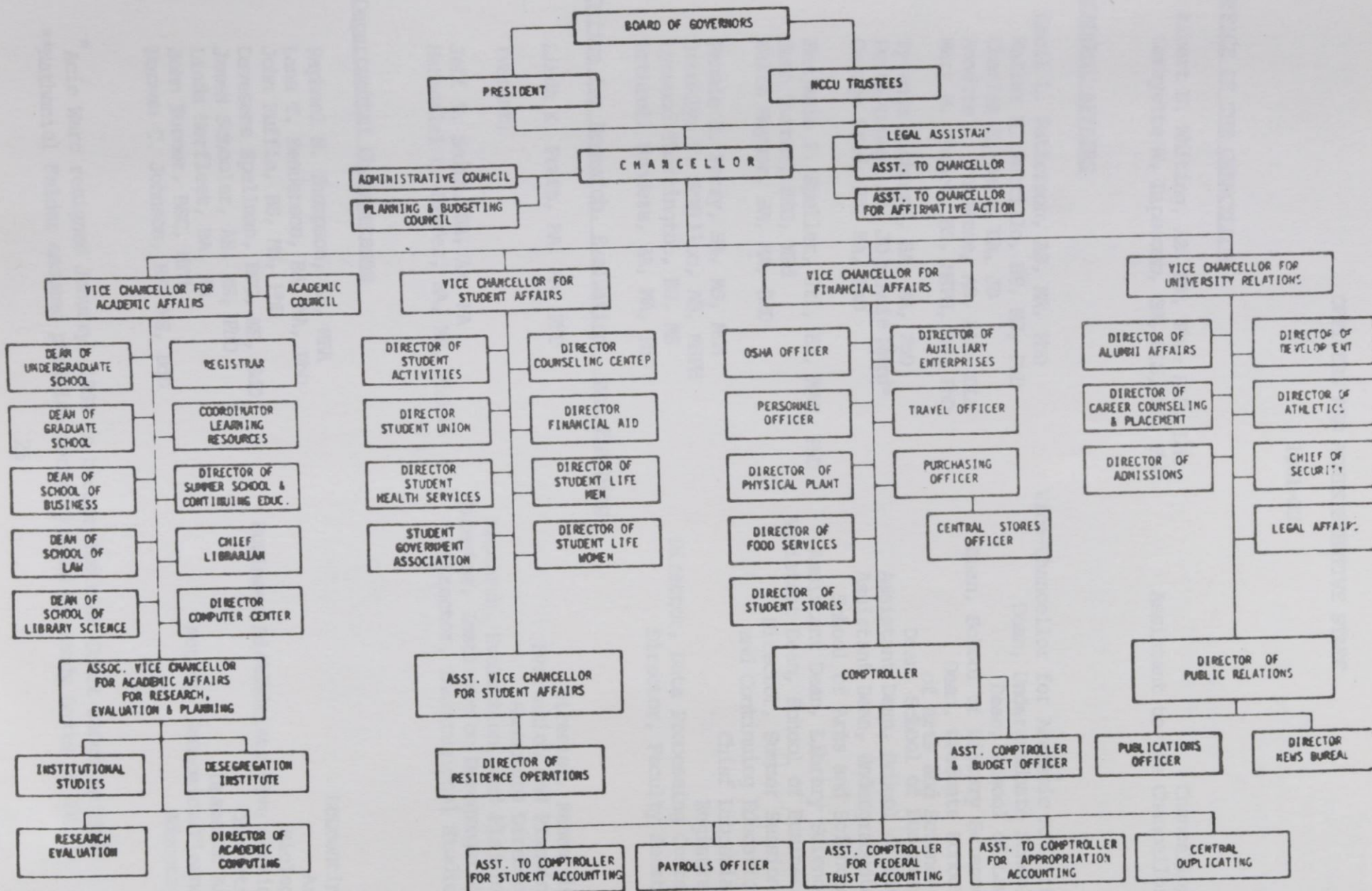
Carl B. Blackburn, III Durham
George W. Hall, Jr. Durham
George C. Deane Raleigh
William S. Williams (Chapel Hill) Philadelphia
John H. Jeffers Asheville
Clarence Taylor Charlotte
Alfred Williams Asheville
Victor B. Byrnes, Jr. Durham
J. Richard Foy, Jr. Rocky Mount
Curtis Mason (Chapel Hill Member) Durham
Charles W. Belland Raleigh

NORTH CAROLINA CENTRAL UNIVERSITY

BOARD OF TRUSTEES

Frank W. Ballance	Warrenton
Gail H. Blackburn, III	Durham
George Watts Carr, Jr.	Durham
George C. Debnam	Raleigh
Hiliary H. Holloway (Chairperson)	Philadelphia
June M. Jeffers	Reidsville
Clarence Walker	Charlotte
Alfred Whitesides	Asheville
Victor S. Bryant, Jr.	Durham
J. Richard Futrell, Jr.	Rocky Mount
Curtis Massey (Ex-Officio Member)	Durham
Charles V. Holland	Raleigh

NCCU ORGANIZATION CHART



OFFICERS AND ADMINISTRATIVE STAFF

1981-82

OFFICE OF THE CHANCELLOR

Albert N. Whiting, AB, MA, PhD, LLD, LHD	Chancellor
LaFayette W. Lipscomb, BA, MLS, MS, PhD	Assistant to the Chancellor

ACADEMIC AFFAIRS

Cecil L. Patterson, AB, MA, PhD	Vice-Chancellor for Academic Affairs
Walter H. Pattillo, BS, MS, PhD	Dean, Undergraduate School
Charles E. Daye, BA, JD	Dean, School of Law
Annette L. Phinazee, AB, BLS, DLS	Dean, School of Library Science
Mary M. Townes, BS, MSPH, MS, PhD	Dean, Graduate School of Arts and Sciences
Tyronza Richmond, BA, MA, PhD	Dean, School of Business
Percy Luney, AB, JD ; Acie Ward*	Assistant Dean, School of Law
George Reid, BA, MA, PhD	Assistant Dean, Undergraduate School of Arts and Sciences
Benjamin F. Speller, Jr., BA, MAT, PhD	Assistant Dean, Library Science
John Turner, BSC, MEd	Assistant Dean, School of Business
Waltz Maynor, BA, MA, EdD	Director, Summer Sessions and Continuing Education
Pennie E. Perry, BA, MS, MLS	Chief Librarian
Brooklyn T. McMillon, AB, MSPH	Registrar
Lynwood Tharrington, BS, MS	Director, Data Processing Center
Arthrell Sanders, BA, MA, PhD	Director, Faculty Senate

Office for Research, Evaluation, and Planning

Linda K. Pratt, BA, MA, PhD	Director, Research, Evaluation and Planning
(vacant)	Associate Director
Jeff E. Smith, BA, AM, MA	Research, Evaluation, and Planning
Nathaniel L. Felder, BA, MA, PhD **	Director, Institute on Desegregation
	Director, Institutional Studies

Departmental Chairpersons

Raphael N. Thompson, BA, MBA	Accounting
Lana T. Henderson, BA, MA, PhD	Art
John Ruffin, BS, MS, PhD	Biology
Davesene Spellman, BSC, MS, EdD	Business Ed/Administrative Service
James Schooler, AB, MS, PhD	Chemistry
Linda Norfleet, BA, MA	Dramatic Art
John Turner, BSC, MEd	Acting, Economics/Finance
Norman C. Johnson, BS, MS, EdD	Education

* Acie Ward resigned January, 1982 to become District Court Judge in Wake County.
 **Nathaniel Felder assumed position formerly held by Sandy Davis on January 1, 1982.

Departmental Chairpersons (continued)

Patsy B. Perry, BA, MA, PhD
Woodrow Nichols, BA, MA, PhD
Howard M. Fitts, BS, MSPH, EdD
Percy Murray, BA, MA, PhD
Beverly A. Nichols, BS, MS, EdD
William T. Fletcher, BS, MS, PhD
Sundar W. Fleming, AB, MBA
Henri Armand, BA, MA, PhD
Gene Strassler, BS, MS, MA, PhD
Johna D. Kelley, BSN, MA, DPH
Robert J. Clack, AB, MA, PhD
Carey Hughley, BS, MS, PhD
Charles R. Jones, BS, MS, PhD
Joseph Aicher, BA, MA, PhD
Leslie Brinson, BA, MA, PhD
George Conklin, AB, MA, PhD

English
Geography
Health Education
History and Social Science
Home Economics
Mathematics
Management/Marketing
Modern Foreign Languages
Music
Nursing
Philosophy
Physical Education and Recreation
Physics
Political Science
Psychology
Sociology

Financial Affairs

George T. Thorne, BSC, MS
Clyde B. Thorpe, BS
Aletha Rease, BSC, MS
William E. McDonald, BSEE
Robert P. Smith, BS
Norman P. Pearson, BSC
Patricia Durham, BS, MS
Shirley B. Ragland, AAS
Rebecca P. Edmonds, BSC, MA
James W. Davis, BS, MS
Lucille Streeter, BS

Vice-Chancellor for Financial Affairs
OSHA Officer
Personnel Officer
Director of Physical Plant
Director of Food Services
Director of Student Stores
Director of Auxiliary Enterprises
Travel Officer
Purchasing Officer
Comptroller
Assistant Comptroller

Student Affairs

Roger B. Bryant, BS, MA, EdD
(vacant)
Shirley Green, BA, MA
Marion E. Covington
Thurman Prescott, Jr., BA
Glen R. Martin, BS, MS, BD, ThM, EdD
Wallace C. Blackwell, BSC, MA
Mildred V. Trent, BA, MA
Kenneth Foushee, BS, MS
Marcono R. Hines, BS, MD

Acting Vice-Chancellor for Student Affairs
Asst. Vice-Chancellor for Student Affairs
Director of Residence Operations
Director of Student Activities
Director of Student Union
Director of Counseling Center
Director of Financial Aid
Director of Student Life for Women
Director of Student Life for Men
Director of Student Health Services

Departmental Chairpersons (continued)

Patsy B. Perry, BA, MA, PhD
Woodrow Nichols, BA, MA, PhD
Howard M. Fitts, BS, MSPH, EdD
Percy Murray, BA, MA, PhD
Beverly A. Nichols, BS, MS, EdD
William T. Fletcher, BS, MS, PhD
Sundar W. Fleming, AB, MBA
Henri Armand, BA, MA, PhD
Gene Strassler, BS, MS, MA, PhD
Johnea D. Kelley, BSN, MA, DPH
Robert J. Clack, AB, MA, PhD
Carey Hughley, BS, MS, PhD
Charles R. Jones, BS, MS, PhD
Joseph Aicher, BA, MA, PhD
Leslie Brinson, BA, MA, PhD
George Conklin, AB, MA, PhD

English
Geography
Health Education
History and Social Science
Home Economics
Mathematics
Management/Marketing
Modern Foreign Languages
Music
Nursing
Philosophy
Physical Education and Recreation
Physics
Political Science
Psychology
Sociology

Financial Affairs

George T. Thorne, BSC, MS
Clyde B. Thorpe, BS
Aletha Rease, BSC, MS
William E. McDonald, BSEE
Robert P. Smith, BS
Norman P. Pearson, BSC
Patricia Durham, BS, MS
Shirley B. Ragland, AAS
Rebecca P. Edmonds, BSC, MA
James W. Davis, BS, MS
Lucille Streeter, BS

Vice-Chancellor for Financial Affairs
OSHA Officer
Personnel Officer
Director of Physical Plant
Director of Food Services
Director of Student Stores
Director of Auxiliary Enterprises
Travel Officer
Purchasing Officer
Comptroller
Assistant Comptroller

Student Affairs

Roger B. Bryant, BS, MA, EdD
(vacant)
Shirley Green, BA, MA
Marion E. Covington
Thurman Prescott, Jr., BA
Glen R. Martin, BS, MS, BD, ThM, EdD
Wallace C. Blackwell, BSC, MA
Mildred V. Trent, BA, MA
Kenneth Foushee, BS, MS
Marcono R. Hines, BS, MD

Acting Vice-Chancellor for Student Affairs
Asst. Vice-Chancellor for Student Affairs
Director of Residence Operations
Director of Student Activities
Director of Student Union
Director of Counseling Center
Director of Financial Aid
Director of Student Life for Women
Director of Student Life for Men
Director of Student Health Services

University Relations

Tyrone Baines, AB, MSW, MA, PhD*	Vice-Chancellor for University Relations
William Malone, BS, MSPH	Assistant Vice-Chancellor for University Relations
William P. Evans, BS	Director of Alumni Affairs
Lindsey Merritt, BSC, MS	Director of Career Counseling and Placement
Nancy Rowland, BA, MA	Director of Admissions
Robert Poole, BA	Director of Development
Henry Lattimore, BS, MS	Director of Physical Education
John W. Smith, BA	Chief of Security
Alex M. Rivera, BA	Director of Public Relations
David H. Witherspoon, AB	Director of News Bureau

1	Sex Distribution of Resident Enrollment, 1974-1981	31
2	Mean Age of Resident Enrollment, 1973-1981	32
3	Survey of Undergraduate Enrollment by Age, 1981	33
4	Survey of Graduate and First Professional Enrollment by Age, 1981	34
5	Geographic Origin of Students, 1968-1981	35
6	Distribution of Students by United States Geographic Area, 1968-1981	36
7	County of Origin of In-State Students, Fall, 1981	37
8	Racial Composition of Resident Enrollment, 1974-1981	38

*Tyrone Baines assumed position formerly held by S. Dallas Simmons on
January 1, 1982.

ENROLLMENT

<u>Table</u>		<u>Page</u>
1	General Characteristics of Enrollment, 1968-1981	29
2	Sex Distribution of Headcount Enrollment, 1926-1981	31
3	Mean Age of Headcount Enrollment, 1975-1981	32
4	Survey of Undergraduate Enrollment by Age, 1981	33
5	Survey of Graduate and First Professional Enrollment by Age, 1981	34
6	Geographic Origin of Students, 1968-1981	35
7	Distribution of Students by United States Geographic Area, 1968-1981	36
8	County of Origin of In-State Students, Fall, 1981	37
9	Racial Composition of Headcount Enrollment, 1976-1981	38

TABLE 1
GENERAL CHARACTERISTICS OF ENROLLMENT,
1968-1981

CHARACTERISTICS	1968			1971			1974			1977			1980			1981		
	MEN	WOMEN	TOTAL	MEN	WOMEN	TOTAL	MEN	WOMEN	TOTAL	MEN	WOMEN	TOTAL	MEN	WOMEN	TOTAL	MEN	WOMEN	TOTAL
UNDERGRADUATE																		
FULL- & PART-TIME																		
FULL-TIME	1009	1663	2672	1183	1830	3013	1339	1907	3246	1365	2188	3553	1307	2068	3375	1329	2191	3520
%	36.8	60.6	97.4	36.7	56.6	93.2	37.3	53.1	90.4	34.0	54.6	88.6	32.7	51.8	84.5	32.7	53.9	86.6
PART-TIME	21	52	73	65	153	218	112	231	343	157	300	457	231	390	621	179	369	548
%	.8	1.9	2.7	2.0	4.7	6.7	3.1	6.4	9.5	3.9	7.5	11.4	5.8	9.8	15.5	4.4	9.0	13.4
LEVEL OF INSTRUCTION																		
FRESHMEN	343	523	866	428	611	1039	535	762	1297	464	799	1263	928	1282	2210	480	790	1270
%	12.5	19.1	31.6	13.2	18.9	32.1	14.9	21.2	36.1	11.6	19.9	31.5	23.2	32.1	55.3	13.6	22.4	36.0
SOPHOMORE	333	618	951	365	556	921	342	445	787	340	545	885	242	418	660	436	669	1105
%	12.1	22.5	34.6	11.3	17.2	28.5	9.5	12.4	21.9	8.5	13.6	22.1	6.0	10.5	16.6	12.4	19.0	31.4
JUNIOR	185	325	510	235	378	613	286	433	719	311	483	794	170	307	477	222	387	609
%	6.7	11.8	18.5	7.2	11.7	18.9	8.0	12.1	20.1	7.8	12.0	19.8	4.2	7.7	11.9	6.3	11.0	17.3
SENIOR	165	218	383	181	349	530	217	365	582	292	468	760	126	257	383	175	289	464
%	5.6	7.9	13.9	5.6	10.8	16.4	6.0	10.1	16.1	7.3	11.7	19.0	3.1	6.4	9.6	5.0	8.2	13.2
SPECIAL	4	31	35	39	89	128	71	133	204	115	193	308	72	194	266	16	56	72
%	.2	1.1	1.3	1.2	2.8	4.0	2.0	3.7	5.7	2.9	4.8	7.7	1.8	4.9	6.7	.5	1.6	2.1
RACE																		
BLACK										1458	2346	3804	1420	2261	3681	1388	2339	3727
%										36.4	58.5	94.9	35.6	56.6	92.1	34.1	57.5	91.6
WHITE										58	136	194	86	168	254	89	188	277
%												1.4	2.1	4.2	6.3	2.2	4.6	6.8
ALL OTHERS										6	6	12	32	29	61	31	33	74
%										.1	.1	.2	.8	.7	1.5	.8	.8	1.6
TOTAL	1030	1715	2745	1248	1983	3231	1451	2138	3589	1522	2488	4010	1538	2458	3996	1508	2560	4068
%	33.9	56.8	90.2	33.5	53.3	86.8	33.0	48.7	81.7	31.3	51.2	82.5	38.4	61.5	100.0	37.1	62.9	100.0
GRADUATE																		
FULL- & PART-TIME																		
FULL-TIME			67	37	42	79	77	103	180	83	111	194	80	145	225	59	117	176
%			31.8	13.7	15.6	29.3	14.6	19.5	34.1	12.8	17.1	29.9	11.8	21.4	33.3	9.5	18.8	28.3
PART-TIME			144	82	109	191	145	204	349	146	308	454	125	326	451	135	311	446
%			68.2	30.4	40.7	71.1	27.4	38.6	66.0	22.5	47.5	70.0	18.5	48.2	66.7	21.7	50.0	71.7
RACE																		
BLACK										190	364	554	145	363	508	137	309	446

TABLE 1 (CONTINUED)
 GENERAL CHARACTERISTICS OF ENROLLMENT,
 1968-1981

CHARACTERISTICS	1968			1971			1974			1977			1980			1981		
	MEN	WOMEN	TOTAL	MEN	WOMEN	TOTAL	MEN	WOMEN	TOTAL	MEN	WOMEN	TOTAL	MEN	WOMEN	TOTAL	MEN	WOMEN	TOTAL
WHITE %										29.3	56.2	85.5	21.4	53.7	75.1	22.0	49.7	71.7
ALL OTHERS %										38	55	93	50	96	146	46	106	152
TOTAL %										5.9	8.5	14.4	7.3	14.2	21.6	7.4	17.0	24.4
FIRST PROFESSIONAL FULL- & PART-TIME												1	10	12	22	11	13	24
FULL-TIME %										.2		.2	1.4	1.8	3.3	1.8	2.1	3.9
PART-TIME %																		
TOTAL	106	105	211	119	151	270	222	309	529	229	419	648	205	471	676	194	428	622
%	3.5	3.4	6.9	3.2	4.1	7.3	5.1	6.9	12.0	4.7	8.6	13.3	30.3	69.7	100.0	31.2	68.8	100.0
FIRST PROFESSIONAL FULL- & PART-TIME																		
FULL-TIME			79	134	34	168	219	48	267	148	47	195	134	65	199	149	83	232
%			91.9	69.8	17.8	87.6	80.2	17.6	97.8	75.1	23.9	99.0	56.3	27.3	83.7	58.7	32.7	91.4
PART-TIME			7	20	4	24	4	2	6	2		2	20	19	39	12	10	22
%	8.1	10.4	2.1	12.5	1.5	.7	2.2	1.5	.5	1.0		1.0	8.4	8.0	16.3	4.7	3.9	8.6
RACE																		
BLACK										85	37	122	87	44	131	87	53	140
%										43.1	18.8	61.9	36.6	18.4	55.0	34.2	20.9	55.1
WHITE										65	10	75	63	39	102	70	40	110
%										33.0	5.1	38.1	26.4	16.3	42.7	27.6	15.7	43.3
ALL OTHERS													4	1	5	4		4
%													1.7	.4	2.1	1.6		1.6
TOTAL	82	4	86	154	38	192	223	50	273	150	47	197	154	84	238	161	93	254
%	2.7	.1	2.8	4.1	1.0	5.2	5.1	1.1	6.2	3.0	1.0	4.0	64.8	35.2	100.0	63.4	36.6	100.0
GRAND TOTAL	1218	1824	3042	1522	2201	3723	1896	2495	4391	1901	2954	4855	1897	3013	4910	1863	3081	4944
%	40.0	60.0	100	40.9	58.4	100	43.2	56.7	100	39.2	60.8	100	38.7	61.3	100.0	37.7	62.3	100.0
TOTAL FTE	1163.0	1741.6	2904.6	1440.1	2082.5	3522.6	1751.3	2304.6	4055.9	1747.9	2716.1	4464.0	1721.25	2669.75	4391.0	1715	2755	4470

TABLE 2
SEX DISTRIBUTION OF HEADCOUNT
ENROLLMENT, 1926-1981

FALL SEMESTER	MALE		FEMALE		TOTAL
	N	%	N	%	ENROLLMENT
1926	8	25	24	75	32
1930	148	28	382	72	530
1935	138	23	472	77	610
1940	245	34	475	66	720
1945	253	30	601	70	854
1950	567	44	726	56	1293
1955	576	41	823	59	1399
1960	785	40	1170	60	1955
1965	950	39	1539	61	2489
1970	1182	38	1967	62	3149
1974	1451	40	2138	60	3589
1975	1568	40	2332	60	3900
1976	1933	41	2832	59	4765
1977	1901	39	2954	61	4855
1978	1891	39	2919	61	4810
1979	1915	39	3002	61	4917
1980	1897	39	3013	61	4910
1981	1863	38	3081	62	4944

TABLE 3
 MEAN AGE OF HEADCOUNT ENROLLMENT,
 1975-1981

YEAR	UNDERGRADUATE							GRADUATE AND FIRST PROFESSIONAL						
	MEN		WOMEN		TOTAL			MEN		WOMEN		TOTAL		
	FULL-	PART-	FULL-	PART-	FULL-	PART-		FULL-	PART-	FULL-	PART-	FULL-	PART-	
	TIME	TIME	TIME	TIME	TIME	TIME	TOTAL	TIME	TIME	TIME	TIME	TIME	TIME	TOTAL
1975	22	26	20	28	21	26	21	28	30	26	31	27	31	29
1976	22	28	20	28	20	28	21	28	31	26	32	27	32	30
1977	22	27	21	27	21	27	22	28	32	27	32	28	32	30
1978	22	27	21	29	22	28	22	28	33	28	32	28	32	30
1979	22	27	23	28	22	27	23	30	32	29	33	30	33	31
1980	21	27	21	29	21	28	22	28	32	28	32	28	32	30
1981	21	28	21	30	21	29	22	29	32	28	33	28	32	31

TABLE 4
 SURVEY OF UNDERGRADUATE ENROLLMENT BY
 AGE, 1981

AGE	IN-STATE								OUT-OF-STATE							
	MEN				WOMEN				MEN				WOMEN			
	FULL-		PART-		FULL-		PART-		FULL-		PART-		FULL-		PART-	
	TIME		TIME		TIME		TIME		TIME		TIME		TIME		TIME	
	N	%	N	%	N	%	N	%	N	%	N	%	N	%	N	%
LESS THAN 18	9	.2	1	.02	31	.8			9	.2	1	.02	17	.4	1	.02
18	177	4.4	4	.09	401	9.9	6	.1	48	1.2	4	.09	78	1.9	3	.07
19	225	5.5	6	.1	386	9.5	13	.3	42	1.0	1	.02	59	1.5	5	.1
20	180	4.4	9	.2	341	8.3	13	.3	41	1.0	1	.02	49	1.2	1	.04
21	178	4.3	10	.2	303	7.4	13	.3	40	.9			33	.8	1	.02
22	85	2.1	12	.3	117	2.9	27	.7	18	.4	2	.04	26	.6	1	.02
23	44	1.1	9	.2	53	1.3	13	.3	13	.3	1	.02	8	.2	1	.02
24	36	.9	9	.2	31	.8	14	.3	9	.2	2	.04	4	.09		
25-30	101	2.5	57	1.4	122	3.0	99	2.4	14	.3	3	.07	9	.2	5	.1
31-35	38	.9	23	.6	66	1.6	73	1.8	2	.04	1	.02	2	.04	1	.02
36-40	10	.2	10	.2	34	.8	37	.9					1	.02		
41-50	9	.2	9	.2	17	.4	28	.7								
51-64			2	.04	3	.07	10	.2								
65 AND OVER	1	.02	1	.02	1	.02	3	.07								
UNKNOWN																
TOTAL	1093	26.7	162	3.8	1906	46.9	349	8.6	236	5.8	17	.4	285	7.0	20	.4

TABLE 5
 SURVEY OF GRADUATE AND FIRST
 PROFESSIONAL ENROLLMENT BY AGE, 1981

AGE	IN-STATE								OUT-OF-STATE							
	MEN				WOMEN				MEN				WOMEN			
	FULL-TIME		PART-TIME		FULL-TIME		PART-TIME		FULL-TIME		PART-TIME		FULL-TIME		PART-TIME	
	N	%	N	%	N	%	N	%	N	%	N	%	N	%	N	%
LESS THAN 18																
18			1													
19																
20					6	.7			2	.2			2	.2		
21	1	.1	1	.1			3	.3					7	.8	1	.1
22	12	1.4	2	.2	19	2.2	12	1.4	5	.6	1	.1	6	.7	2	.2
23	17	2.0	8	.9	20	2.3	16	1.8	5	.6	1	.1	3	.3	1	.1
24	19	2.2	9	1.0	21	2.4	16	1.8	5	.6	1	.1	3	.3	1	.1
25-30	64	7.3	49	5.6	49	5.6	96	11.0	18	2.1	4	.4	11	1.3	5	.6
31-35	39	4.5	34	3.9	27	3.0	86	9.8	12	1.4	3	.3	6	.7		
36-40	5	.6	16	1.8	13	1.5	50	5.7	1	.1			1	.1		
41-50	4	.4	15	1.7	6	.7	40	4.6	1	.1			2	.2	1	.1
51-64	1	.1	4	.4			8	.9								
65 AND OVER																
UNKNOWN																
TOTAL	162	18.5	138	15.8	162	18.5	311	35.5	46	5.3	9	1.0	38	4.3	10	1.1

TABLE 6
 GEOGRAPHIC ORIGIN OF STUDENTS,
 1968-1981

GEOGRAPHIC ORIGIN	1968		1971		1974		1977		1978		1980		1981	
	N	%	N	%	N	%	N	%	N	%	N	%	N	%
COUNTY OF LOCATION (DURHAM)	512	17	880	24	1096	25	1231	25	1203	25	1219	25	1198	24
ADJACENT COUNTIES	295	10	421	11	528	12	653	14	685	14	700	14	676	14
OTHER N.C. COUNTIES	1777	58	2033	55	2320	53	2477	51	2414	50	2420	49	2409	49
OUT-OF-STATE	458	15	389	10	447	10	494	10	508	11	571	12	592	12
FOREIGN													69	1
TOTALS	3042	100	3723	100	4391	100	4855	100	4810	100	4910	100	4944	100

TABLE 8

COUNTY OF ORIGIN OF UNDERGRADUATE, FIRST PROFESSIONAL,
AND GRADUATE STUDENTS, FALL 1981

COUNTY	NUMBER	COUNTY	NUMBER	COUNTY	NUMBER	COUNTY	NUMBER
ALAMANCE	46	CUMBERLAND	158	JOHNSTON	27	RANDOLPH	6
ALEXANDER	3	CURRITUCK		JONES	17	RICHMOND	14
ALLEGHANY	1	DARE		LEE	20	ROBERSNON	54
ANSON	20	DAVIDSON	19	LENOIR	48	ROCKINGHAM	29
ASHE	1	DAVIE	2	LINCOLN	7	ROWAN	25
AVERY		DUPLIN	60	MCDOWELL	2	RUTHERFORD	5
BEAUFORT	26	DURHAM	1198	MACON		SAMPSON	45
BERTIE	32	EDGECOMBE	72	MADISON	1	SCOTLAND	39
BLADEN	31	FORSYTH	102	MARTIN	27	STANLEY	10
BRUNSWICK	17	FRANKLIN	28	MECKLENBURG	131	STOKES	9
BUNCOMBE	19	GASTON	24	MITCHELL	2	SURRY	2
BURKE	8	GATES	8	MONTGOMERY	8	SWAIN	
CABARRUS	15	GRAHAM		MOORE	23	TRANSYLVANIA	5
CALDWELL	8	GRANVILLE	77	NASH	47	TYRELL	3
CAMDEN	6	GREENE	6	NEW-HANOVER	52	UNION	10
CARTERET	8	GUILFORD	112	NORTHAMPTON	65	VANCE	75
CASWELL	25	HALIFAX	98	ONSLOW	38	WAKE	334
CATAWBA	13	HARNETT	31	ORANGE	154	WARREN	51
CHATHAM	25	HAYWOOD		PAMLICO	8	WASHINGTON	25
CHEROKEE		HENDERSON	4	PASOUOTANK	28	WATAUGA	
CHOWAN	14	HERTFORD	56	PENDER	34	WAYNE	113
CLAY		HOKE	6	PEROUIMANS	7	WILKES	4
CLEVELAND	17	HYDE	5	PERSON	86	WILSON	58
COLUMBUS	31	IREDELL	17	PITT	43	YADKIN	
CRAVEN	40	JACKSON	1	POLK	2	YANCEY	
						TOTAL	4283

TABLE 9
 RACIAL COMPOSITION OF HEADCOUNT
 ENROLLMENT, 1976-1981

YEAR	BLACK		WHITE		OTHER		TOTAL
	NUMBER	PERCENT OF TOTAL	NUMBER	PERCENT OF TOTAL	NUMBER	PERCENT OF TOTAL	
1976	4314	90.0	366	8.0	85	2.0	4765
1977	4482	92.0	360	7.0	13	.3	4855
1978	4276	89.0	451	9.0	83	2.0	4810
1979	4323	87.9	511	10.4	83	1.7	4917
1980	4320	88.0	502	10.2	88	1.8	4910
1981	4313	87.2	539	10.9	92	1.9	4944

ADMISSIONS

<u>Table</u>		<u>Page</u>
10	Number of Student Applications, Acceptances and Enrollees, Fall 1981	40
Fig. 1	First Time Freshmen, Fall 1969-1981	41
Fig. 2	Transfer Students, Fall 1969-1981	42
Fig. 3	Graduate Students, Fall 1975-1981	43
Fig. 4	First Professional Students, Fall 1975-1981	44
11	Mean SAT Scores of Entering Freshmen, 1964-1981	45
12	High School Class Rank of Fall New Freshmen, 1964-1981	46
13	Undergraduate Transfers into NCCU and from NCCU, 1968-1981	47

TABLE 10
 NUMBER OF STUDENT APPLICATIONS,
 ACCEPTANCES AND ENROLLEES, FALL 1981

NEW STUDENTS	IN-STATE				OUT-OF-STATE				TOTAL
	MEN	%	WOMEN	%	MEN	%	WOMEN	%	
FIRST-TIME FRESHMEN									
NUMBER OF APPLICANTS	455		784		150		185		1574
NUMBER ACCEPTED	455	100	784	100	150	100	185	100	1574
NUMBER ACTUALLY ENROLLED	270	59	490	63	69	46	102	55	931
NEW TRANSFERS									
UNDERGRADUATE									
NUMBER OF APPLICANTS	70		118		15		15		218
NUMBER ACCEPTED	69	99	118	100	15	100	15	100	217
NUMBER ACTUALLY ENROLLED	46	67	90	76	9	60	9	60	154
GRADUATE STUDENTS									
NUMBER OF APPLICANTS	100		218		22		25		365
NUMBER ACCEPTED	90	90	214	98	18	82	24	96	346
NUMBER ACTUALLY ENROLLED	76	84	179	84	12	67	10	42	277
FIRST PROFESSIONAL STUDENTS									
NUMBER OF APPLICANTS	184		86		216		72		558
NUMBER ACCEPTED	89	48	44	51	54	25	25	33	212
NUMBER ACTUALLY ENROLLED	54	29	28	64	17	31	10	40	109

FIG. 1 - First Time Freshmen, FALL 1969-1980

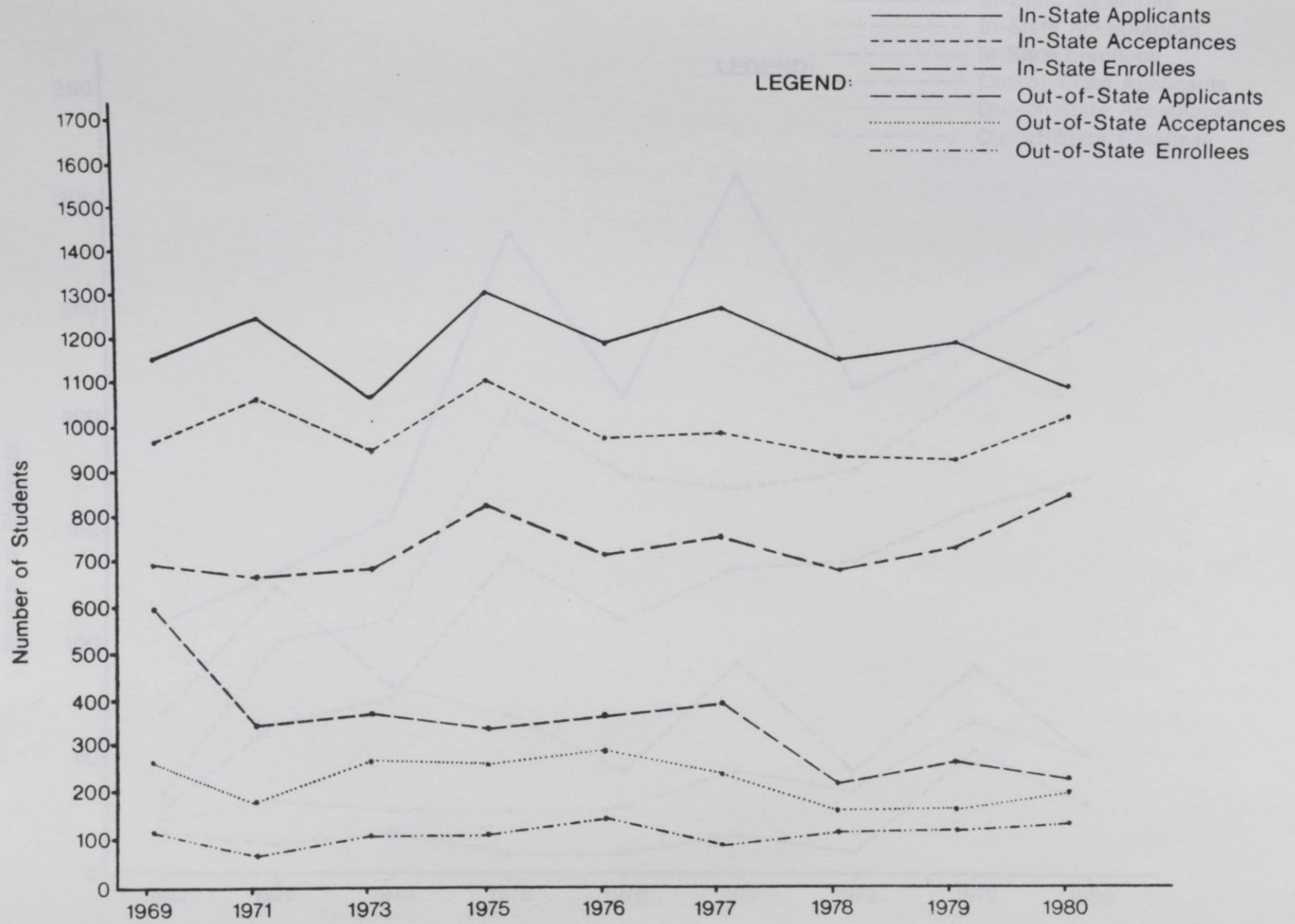


FIG. 2 - Transfer Students, FALL 1969-1980

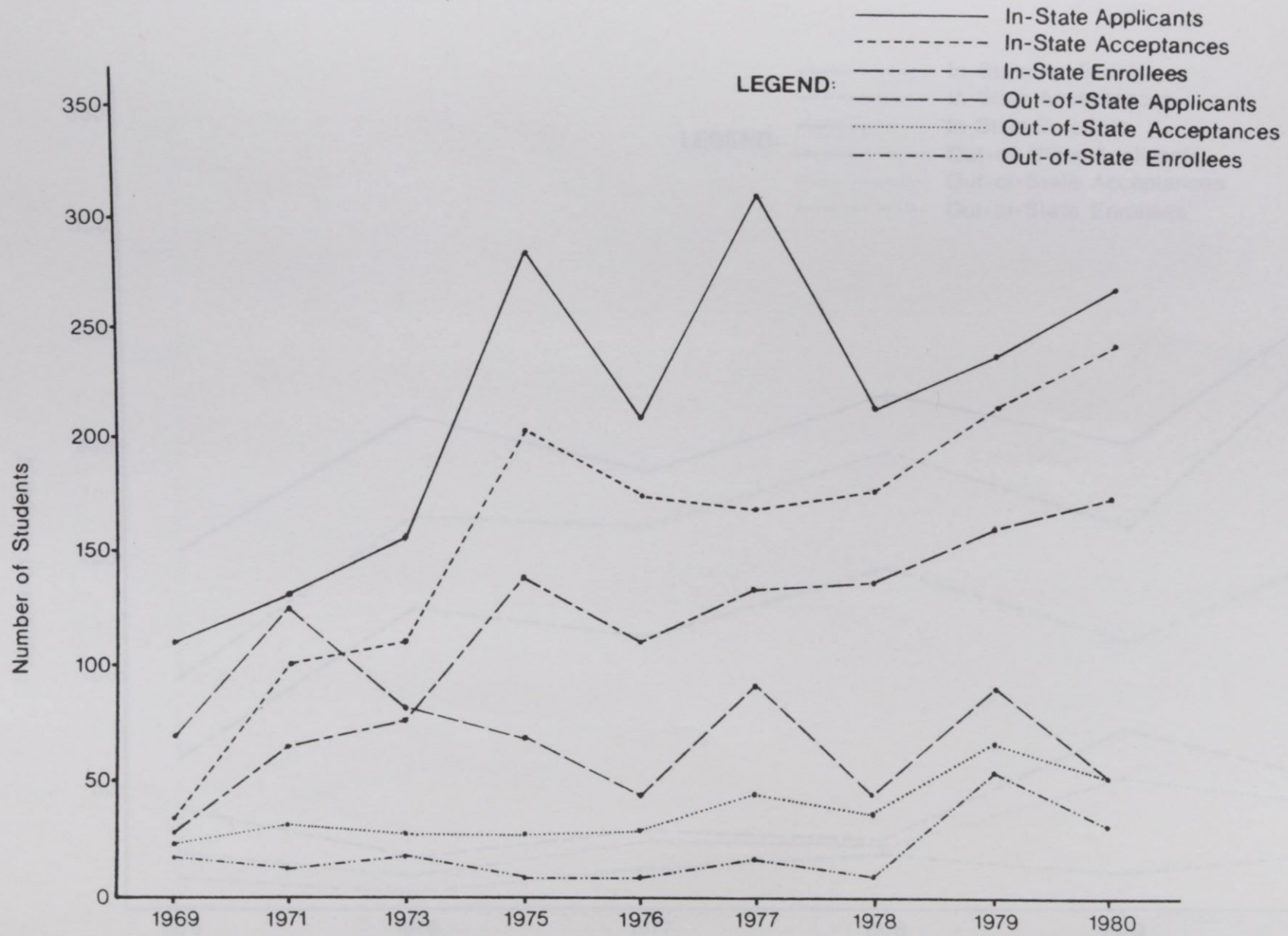


FIG. 3 - Graduate Students, FALL 1975-1980

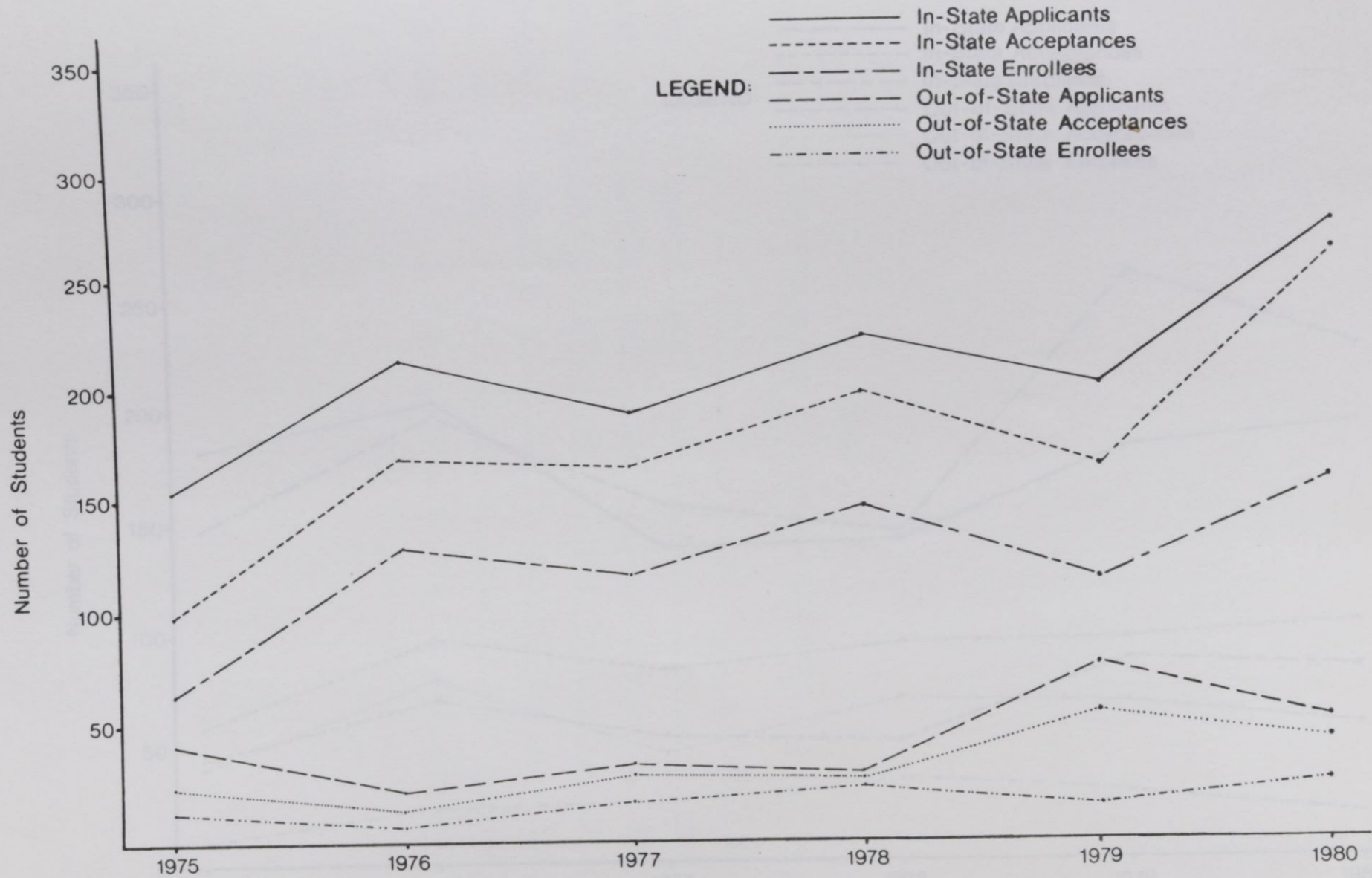


TABLE 11

MEAN SAT SCORES OF ENTERING FRESHMEN,
1964-1981

SAT	1964	1969	1974	1977	1978	1980	1981
VERBAL MEAN	319	350	346	341	350	295	298
MATHEMATICAL MEAN	336	377	371	359	357	329	327
NOT AVAILABLE	118	8	155	303	301	58	86
TOTAL MEAN	655	727	717	700	707	624	625
NUMBER ENROLLED	701	816	957	872	834	986	931

TABLE 12

HIGH SCHOOL CLASS RANK OF FALL NEW
FRESHMEN, 1964-1981

CLASS RANK	1964		1969		CLASS RANK	1974		1977		1978		1980		1981	
	QUARTILE	N	%	N		%	QUINTILE	N	%	N	%	N	%	N	%
Highest	394	61	352	43	Highest	165	17	138	16	125	15	102	10.3	109	11.7
Second	151	23	242	30	Second	225	24	236	27	204	24	212	21.5	196	21.0
Third	73	11	117	14	Third	197	21	210	24	211	25	270	27.4	246	26.4
Fourth	23	3	53	7	Fourth	137	14	116	13	130	16	181	18.4	177	19.0
					Fifth	62	6	27	3	33	4	52	5.3	68	7.3
Not					Not										
Available	60	2	52	6	Available	171	18	145	17	131	16	169	17.1	135	14.5
Totals	701	100	816	100	Totals	957	100	872	100	834	100	986	100	931	100

TABLE 13

UNDERGRADUATE TRANSFERS INTO NCCU
1968-1981

INSTITUTION	TRANSFERRED INTO NCCU						
	1968	1972	1974	1977	1978	1980	1981
IN-STATE PUBLIC SENIOR COLLEGES	5	8	21	27	26	23	26
IN-STATE PRIVATE SENIOR COLLEGES	1	7	7	21	16	26	22
IN-STATE PUBLIC COMMUNITY COLLEGES & TECHNICAL INSTITUTES		21	1	57	61	70	59
IN-STATE PRIVATE JUNIOR COLLEGES	1	14	19	17	26	5	6
OUT-OF-STATE INSTITUTIONS		19	39	35	27	76	41
TOTAL	7	69	87	157	156	200	154

DEGREES CONFERRED

<u>Table</u>		<u>Page</u>
14	Number of Bachelor's Degrees Conferred by Field of Study, 1967-1981	49
15	Number of Graduate and First Professional Degrees Conferred by Field of Study, 1967-1981	51
16	Mean NTE Scores of Education Graduates, 1972-1981	53

TABLE 14

NUMBER OF BACHELOR'S DEGREES CONFERRED
BY FIELD OF STUDY, 1967-1981

DISCIPLINE, DIVISION AND SPECIALTY	1967		1972		1976		1977		1978		1980		1981	
	N	%	N	%	N	%	N	%	N	%	N	%	N	%
BIOLOGICAL SCIENCES														
BIOLOGY, GENERAL	19	5.9	24	4.1	36	5.9	30	4.8	27	4.2	24	4.2	20	3.5
BUSINESS AND MANAGEMENT														
ACCOUNTING	12	3.7	30	5.2	25	4.1	26	4.1	29	4.5	38	6.6	36	6.3
BUSINESS ECONOMICS	10	3.1	1	.2	7	1.1	3	.5	10	1.5	5	0.9	1	.2
BUSINESS MANAGEMENT AND ADMINISTRATION	4	1.2	50	8.6	119	19.3	119	18.9	128	19.8	94	16.3	106	18.4
SECRETARIAL STUDIES	5	1.6	4	.7										
EDUCATION														
ART EDUCATION			5	.9										
BUSINESS, COMMERCE & DISTRIBUTIVE EDUCATION	35	10.9	59	10	28	4.6	22	3.5	35	5.4	34	5.9	30	5.2
ELEMENTARY EDUCATION, GENERAL			27	4.6	64	10.4	68	11	58	9.0	63	10.9	59	10.2
HEALTH EDUCATION	24	7.5	14	2.4	8	1.3	22	3.5	12	1.9	12	2.1	7	1.2
HOME ECONOMICS EDUCATION	17	5.3	7	1.2			7	1.1						
MUSIC EDUCATION	3	.9	12	2.1	11	1.9								
NURSERY/KINDERGARTEN EDUCATION	3	.9	6	1										
PHYSICAL EDUCATION	18	5.6	29	5	15	2.4	15	2.4	21	3.2	12	2.1	13	2.3
RECREATIONAL EDUCATION					18	2.9	23	3.7						
FINE AND APPLIED ARTS														
ART (DRAWING, SCULPTURE)	2	.6	.5	.9	15	2.4	11	1.8	1	.2	13	2.2	13	2.3
DRAMATIC ARTS			6	1	6	1	1	.2	3	.5	2	3.5	9	1.6
FINE ARTS (GENERAL)					4	.7	10	1.6	5	.8	11	1.9	11	2.0
MUSIC (LIBERAL ARTS)														
VISUAL COMMUNICATIONS														
FOREIGN LANGUAGES														
FRENCH	20	6.2	5	.9	5	.9	1	.2	2	.3	1	0.2	1	.2
GERMAN			1	.2					1	.2				
SPANISH			4	.7	3	.5			2	.3	2	0.3	1	.2
HEALTH PROFESSIONS														
NURSING	4	1.2	13	2.2	15	2.4	41	6.5	37	5.7	39	6.8	35	6.1
HOME ECONOMICS														
CLOTHING AND TEXTILES			6	1.0	14	2.3	8	1.3	27	4.2	13	2.2	6	1.0
FOODS AND NUTRITION			2	.3	3	.5	1	.2	7	1.1	4	0.6	6	1.0
HOME ECONOMICS, GENERAL			10	1.7	10	1.6	3	.5	4	.6	9	1.6	10	1.7

TABLE 14 (CONTINUED)

NUMBER OF BACHELOR'S DEGREES CONFERRED
BY FIELD OF STUDY, 1967-1981

DISCIPLINE, DIVISION AND SPECIALTY	1967		1972		1976		1977		1978		1980		1981	
	N	%	N	%	N	%	N	%	N	%	N	%	N	%
LETTERS														
ENGLISH, GENERAL	27	8.4	21	3.6	17	2.8	23	3.7	8	1.2	22	3.8	19	3.3
PHILOSOPHY							1	2			1	.2		
MATHEMATICS														
MATHEMATICS, GENERAL	12	3.7	13	2.2	9	1.5	9	1.4	8	1.2	3	0.5	7	1.2
PHYSICAL SCIENCE														
CHEMISTRY	6	1.9	7	1.2	9	1.5	4	.6	8	1.2			6	1.0
PHYSICS			2	.3					2	.3		
PSYCHOLOGY														
PSYCHOLOGY, GENERAL	13	4.1	22	3.8	25	4.1	39	6.2	31	4.8	12	2.1	25	4.3
PUBLIC AFFAIRS AND SERVICES														
LAW ENFORCEMENT AND CORRECTIONS					18	2.9	23	3.7	40	6.2	34	5.9	46	8.0
PUBLIC ADMINISTRATION									17	2.7	51	8.9		
PARKS & RECREATION											21	3.6	14	2.4
SOCIAL SCIENCES														
AFRO-AMERICAN STUDIES					2	.3								
HISTORY	27	8.3	44	7.6	34	5.5	20	3.2	23	3.6	12	2.1	7	1.2
GEOGRAPHY	17	5.3	14	2.4	9	1.5	9	1.4	9	1.4	5	.9	15	2.6
POLITICAL SCIENCE	7	2.2	30	5.2	54	8.8	55	8.8	52	.8	17	3.0	55	9.5
SOCIAL SCIENCE, GENERAL	2	.6	3	.5	5	.8	4	.6				
SOCIOLOGY	35	10.9	106	18.2	52	6.8	31	4.9	35	5.4	22	3.8	18	3.1
TOTAL	322	100	582	100	615	100	630	100	647	100	576	100	576	100

TABLE 15

NUMBER OF GRADUATE AND FIRST
PROFESSIONAL DEGREES CONFERRED BY
FIELD OF STUDY, 1967-1981

DISCIPLINE, DIVISION AND SPECIALTY	1967		1972		1977		1978		1980		1981	
	N	%	N	%	N	%	N	%	N	%	N	%
BIOLOGICAL SCIENCES												
BIOLOGY, GENERAL	5	3.7	4	3	3	1.2	2	.8	3	1.4	5	2.3
BUSINESS AND MANAGEMENT												
BUSINESS AND COMMERCE			7	5.2								
BUSINESS ECONOMICS												
BUSINESS MANAGEMENT AND ADMINISTRATION			6	4.4	11	4.5	18	7.4	16	7.6	18	8.3
EDUCATION												
BUSINESS, COMMERCE & DISTRIBUTIVE EDUCATION	13	9.7	5	3.7	7	2.9	6	2.5	11	5.2	3	1.4
EDUCATION OF THE EMOTIONALLY DISTURBED					5	2.1	1	.4				
EDUCATION OF THE MENTALLY RETARDED			13	9.6	23	9.5	23	9.5				
EDUCATIONAL ADMINISTRATION	3	2.2	7	5.2	19	7.9	7	2.9	11	5.2	14	6.4
EDUCATIONAL MEDIA			1	.7	11	4.5	10	4.1	4	1.9	4	1.8
ELEMENTARY EDUCATION (GENERAL)	52	39.9	8	5.9	20	8.3	22	9.0	5	2.3	2	.9
HOME ECONOMICS EDUCATION	5	3.8					3	1.2				
MUSIC EDUCATION	3	2.2										
PHYSICAL EDUCATION	7	5.2	3	2.2	4	1.6	3	1.2	3	1.4	4	1.8
RECREATION EDUCATION					2	.8						
SPECIAL EDUCATION, GENERAL									35	16.7	18	8.3
SPEECH CORRECTION			1	.7	8	3.3	7	2.9	3	1.4	5	2.3
STUDENT PERSONNEL, GUIDANCE & COUNSELING	8	6.0	12	8.9	34	14.0	39	16	25	11.9	35	16.0
SIXTH YEAR PROGRAM	4	3.0										
FINE AND APPLIED ARTS												
MUSIC (LIBERAL ARTS)			5	3.7	5	2.1	1	.4			5	2.3
FOREIGN LANGUAGE												
FRENCH	1	.7	1	.7								
HOME ECONOMICS												
HOME ECONOMICS, GENERAL			2	1.5			5	2.1	3	1.4	2	.9
LAW												
JURIS DOCTOR'S	18	13.4	33	24.4	43	17.8	54	22.3	45	21.4	67	30.7
LETTERS												
ENGLISH, GENERAL	2	1.5	2	1.5	4	1.6	4	1.6	6	2.9		

TABLE 15 (CONTINUED)

NUMBER OF GRADUATE AND FIRST
PROFESSIONAL DEGREES CONFERRED BY
FIELD OF STUDY, 1967-1981

DISCIPLINE, DIVISION AND SPECIALTY	1967		1972		1977		1978		1980		1981	
	N	%	N	%	N	%	N	%	N	%	N	%
<u>LIBRARY SCIENCE</u>												
LIBRARY SCIENCE, GENERAL			17	12.6	22	9.0	24	9.9	24	11.4	18	8.3
<u>MATHEMATICS</u>												
MATHEMATICS, GENERAL					2	.8			1	.5		
<u>PHYSICAL SCIENCE</u>												
CHEMISTRY, GENERAL	3	2.2	2	1.5	4	1.6	2	.8	2	.9	2	.9
<u>PSYCHOLOGY</u>												
PSYCHOLOGY, GENERAL									4	1.9	8	3.7
<u>PUBLIC AFFAIRS AND SERVICES</u>												
PARK AND RECREATION MANAGEMENT							2	.8	1	.5		
<u>SOCIAL SCIENCES</u>												
HISTORY	9	6.7	4	3	10	4.1	5	2.0	3	1.4	5	2.3
SOCIOLOGY	1	.7	2	1.5	2	.8	4	1.6	5	2.9	3	1.4
TOTAL	134	100	135	100	242	100	239	100	210	100	218	100

TABLE 16

MEAN NTE SCORES OF EDUCATION GRADUATES,
1972-1980

SCORES	1972-73		1974-75		1976-77		1978-79		1980-81	
	NUMBER	AVERAGE	NUMBER	AVERAGE	NUMBER	AVERAGE	NUMBER	AVERAGE	NUMBER	AVERAGE
	EXAMINED	SCORE	EXAMINED	SCORE	EXAMINED	SCORE	EXAMINED	SCORE	EXAMINED	SCORE
NTE WEIGHTED COMMON EXAM SCORES	148	495	137	500	160	487	179	462	131	448
NTE COMPOSITE SCORES	148	1030	138	1031	147	1012	149	965	109	965

TABLE 16.1
 SCORES BELOW 950 ON THE COMPOSITE NTE,
 1972-1980

NTE SCORES	1972-73		1974-75		1976-77		1978-79		1980-81	
	N	%	N	%	N	%	N	%	N	%
COMPOSITE NTE SCORES BELOW 950	74	35.4	28	20.3	50	34.0	73	49.0	56	51.3

FINANCIAL AID

SCHOLARSHIPS, GRANTS AND AWARDS,
1979-1981

<u>Table</u>		<u>Page</u>
17	Scholarships, Grants and Awards, 1979-1981	56
18	Employment of Students at NCCU, 1979-1981	57
19	Student Loans, 1979-1981	58
20	Financial Aid Awards, 1979-1981	59

* Abbreviations refer to the following programs:
 FEOG - Federal Educational Opportunity Grant
 HPWA - Health Professions Education Assistance Act
 SEOG - Supplemental Education Opportunity Grant

TABLE 17
SCHOLARSHIPS, GRANTS AND AWARDS,
1980-1981

FINANCIAL AID	NUMBER	TOTAL AMOUNT	AVERAGE AWARD
UNDERGRADUATE			
NON-ATHLETIC	80	\$70,903	\$886.29
ATHLETIC	207	\$138,439	\$668.79
SEOG	1403	\$767,304	\$546.90
BEOG	3089	\$3,056,592	\$989.51
HPEAA AND NURSING ASSISTANCE	9	\$3,050	\$338.89
LAW SCHOOL			
ASSISTANCE TO PROFESSIONAL STUDENTS			
GRADUATE SCHOOL			
FELLOWSHIPS, TRAINEESHIPS, GRANTS & SCHOLARSHIPS	16	\$32,870	\$2,054.38
ASSISTANTSHIPS	28	\$30,282	\$1,081.50

* Abbreviations refer to the following programs;
 BEOG - Basic Educational Opportunity Grant
 HPEAA - Health Professions Education Assistance Act
 SEOG - Supplemental Education Opportunity Grant

TABLE 18
EMPLOYMENT OF STUDENTS AT NCCU,
1980-1981

EMPLOYMENT	NUMBER	AMOUNT	AVERAGE AWARD
UNDERGRADUATE			
COLLEGE WORK-STUDY	1199	\$702,725	\$586.09
PACE JOBS	59	\$66,841	\$1,132.90
OTHER STUDENT EMPLOYMENT	118	\$39,693	\$336.38
GRADUATE SCHOOL			
COLLEGE WORK-STUDY	1	\$700	\$700.00
PACE JOBS	2	\$1,133	\$566.50
OTHER STUDENT EMPLOYMENT	4	\$1,450	\$362.50
LAW SCHOOL			
COLLEGE WORK-STUDY			
PACE JOBS			
OTHER STUDENT EMPLOYMENT			

TABLE 19
STUDENT LOANS, 1980-1981

TYPES OF LOANS	NUMBER	AMOUNT	AVERAGE AWARD
UNDERGRADUATE			
NDS LOANS	149	\$70,602	\$473.84
HPEAA LOANS			
NURSING LOANS	19	\$7,124	\$374.95
GRADUATE SCHOOL			
NDS LOANS	21	\$9,948	\$473.71
LAW SCHOOL			
NDS LOANS			
OUT OF STATE GSL	204	\$414,034	\$2,029.58

* Abbreviations refer to the following programs;
NDS - National Direct Student
HPEAA - Health Professions Education Assistance Act
GSL - Guaranteed Student Loans

TABLE 20
 FINANCIAL AID AWARDS, 1980-81

TOTAL NUMBER OF APPLICANTS	5131
APPLICANTS WHO ACTUALLY ENROLLED	3996
NUMBER OF AWARDS AND LOANS	8109
UNDUPLICATED NUMBER OF AID RECIPIENTS	4636
DOLLAR AMOUNT OF AWARDS & LOANS	\$6,985,464
MEAN AWARD	\$861
MEAN AWARD PER RECIPIENT	\$1507

INSTRUCTIONAL STAFFING PATTERNS BY DEPARTMENT AND BY RANK, FALL 1968-1981

DEPARTMENT AND ACADEMIC YEAR	1968	1970	1974	1977	1978	1980	1981
ACADEMIC STAFF							
PROFESSOR							
ASSOCIATE PROFESSOR							
ASSISTANT PROFESSOR							
INSTRUCTOR							
LECTURER							
TOTAL							
ALL INSTRUCTIONAL FACULTY							
TOTAL	23	33	5	20	18	24	21

Table		Page
21	Instructional Staffing Patterns by Department by Rank, Fall 1968-1981	61
22	Full-Time Equivalency of Instructional Staff by Department by Rank, Fall 1981	67

ACADEMIC STAFF							
PROFESSOR							
ASSOCIATE PROFESSOR							
ASSISTANT PROFESSOR							
INSTRUCTOR							
LECTURER							
TOTAL	8	7	8	11	8	10	11
NON-ACADEMIC STAFF							
PROFESSOR							
ASSOCIATE PROFESSOR							
ASSISTANT PROFESSOR							
INSTRUCTOR							
LECTURER							
TOTAL	11	15	15	15	16	14	10

BUSINESS ADMINISTRATION							
PROFESSOR							
ASSOCIATE PROFESSOR							
ASSISTANT PROFESSOR							
INSTRUCTOR							
LECTURER							
TOTAL	11	25	20	20			
BUSINESS EDUCATION							
PROFESSOR							
ASSOCIATE PROFESSOR							
ASSISTANT PROFESSOR							
INSTRUCTOR							
LECTURER							
TOTAL	11	25	20	20			

TABLE 21

INSTRUCTIONAL STAFFING PATTERNS BY
DEPARTMENT AND BY RANK, FALL 1968-1981

DEPARTMENT AND ACADEMIC RANK	1968	1971	1974	1977	1978	1980	1981
ACADEMIC SKILLS							
PROFESSOR							
ASSOCIATE PROFESSOR		1		1		2	2
ASSISTANT PROFESSOR	1			2	1	1	1
INSTRUCTOR	12	10	7	7	8	16	11
LECTURER			2	10	9	5	3
TOTAL	13	11	9	20	18	24	17
ACCOUNTING *							
PROFESSOR					1		
ASSOCIATE PROFESSOR							1
ASSISTANT PROFESSOR					1	2	3
INSTRUCTOR					3	2	
LECTURER					2	1	1
TOTAL					7	5	5
ART							
PROFESSOR							1
ASSOCIATE PROFESSOR		1	2	2	3	4	3
ASSISTANT PROFESSOR	2	1	2	3	3	5	4
INSTRUCTOR	4	5	2				
LECTURER			2	6	3	3	3
TOTAL	6	7	8	11	9	12	11
BIOLOGY							
PROFESSOR	3	5	4	3	4	3	3
ASSOCIATE PROFESSOR		2	5	5	8	7	8
ASSISTANT PROFESSOR	6	4	2	3			2
INSTRUCTOR	7	5	2		1	1	
LECTURER			2	4	3	6	4
TOTAL	16	16	15	15	16	17	17
BUSINESS ADMINISTRATION *							
PROFESSOR	3	3	1	3			
ASSOCIATE PROFESSOR		3	3	4			
ASSISTANT PROFESSOR	8	9	7	8			
INSTRUCTOR	10	10	12	10			
LECTURER			4	14			
TOTAL	21	25	27	39			
BUSINESS EDUCATION/ADMIN SERVICES *							

TABLE 21 (CONTINUED)

INSTRUCTIONAL STAFFING PATTERNS BY
DEPARTMENT AND BY RANK, FALL 1968-1981

DEPARTMENT AND ACADEMIC RANK	1968	1971	1974	1977	1978	1980	1981
PROFESSOR					1	2	2
ASSOCIATE PROFESSOR					1	1	2
ASSISTANT PROFESSOR						1	4
INSTRUCTOR					3	2	2
LECTURER					2	2	1
TOTAL					7	8	11
CHEMISTRY							
PROFESSOR	2	2		1	1	3	3
ASSOCIATE PROFESSOR	2	2	3	3	3	2	2
ASSISTANT PROFESSOR	1	3	2	1	1	1	1
INSTRUCTOR							
LECTURER			2	2	2	1	2
TOTAL	5	7	7	7	7	7	8
DRAMA							
PROFESSOR						1	1
ASSOCIATE PROFESSOR		1	1	1	1		
ASSISTANT PROFESSOR	2		1	1	1	2	3
INSTRUCTOR	2	4	2	3	3	2	
LECTURER			2	1			1
TOTAL	4	5	6	6	5	5	5
ECONOMICS/FINANCE *							
PROFESSOR						1	1
ASSOCIATE PROFESSOR					2	4	3
ASSISTANT PROFESSOR					4	4	3
INSTRUCTOR							
LECTURER					3	2	1
TOTAL					9	11	8
EDUCATION							
PROFESSOR	9	11	8	8	6	6	7
ASSOCIATE PROFESSOR	3	11	8	10	9	8	10
ASSISTANT PROFESSOR	7	6	6	6	7	6	5
INSTRUCTOR	2	5	2				1
LECTURER			5	9	8	4	2
TOTAL	21	33	29	33	30	24	25
ENGLISH							
PROFESSOR	5	5	4	3	3	3	4
ASSOCIATE PROFESSOR	1	3	1	7	7	7	8

TABLE 21 (CONTINUED)

INSTRUCTIONAL STAFFING PATTERNS BY
DEPARTMENT AND BY RANK, FALL 1968-1981

DEPARTMENT AND ACADEMIC RANK	1968	1971	1974	1977	1978	1980	1981
ASSISTANT PROFESSOR	7	6	10	6	6	6	6
INSTRUCTOR	18	15	5	3	2	1	1
LECTURER			3	6	6	3	2
TOTAL	31	29	23	25	24	20	21
<u>GEOGRAPHY</u>							
PROFESSOR	1	1				1	1
ASSOCIATE PROFESSOR			1	3	3	3	3
ASSISTANT PROFESSOR		2	1		1	1	1
INSTRUCTOR	4	2	1				
LECTURER			4	2	1	1	
TOTAL	5	5	7	5	5	6	5
<u>HEALTH EDUCATION</u>							
PROFESSOR	1			1	1	1	1
ASSOCIATE PROFESSOR	1	2	1				1
ASSISTANT PROFESSOR	2	1					
INSTRUCTOR	4	7	2	3	4	4	3
LECTURER			4	5	2	1	1
TOTAL	8	10	7	9	7	6	6
<u>HISTORY/SOCIAL SCIENCE</u>							
PROFESSOR		4	2	2	2	3	3
ASSOCIATE PROFESSOR	3		3	4	4	5	4
ASSISTANT PROFESSOR		3	1	3	3	2	1
INSTRUCTOR	3	7	4	2	2	1	1
LECTURER	8		1	2	4	4	6
TOTAL	14	14	11	13	15	15	15
<u>HOME ECONOMICS</u>							
PROFESSOR	1	2	1	1		1	
ASSOCIATE PROFESSOR	1	1	3	2	1	3	3
ASSISTANT PROFESSOR	4	4	3	3	3	3	5
INSTRUCTOR	2	3	1				
LECTURER			3	5	5	1	1
TOTAL	8	10	11	11	9	8	9
<u>LAW</u>							
PROFESSOR	4	9	1	4	3	4	5
ASSOCIATE PROFESSOR	2	1	6	5	6	6	6
ASSISTANT PROFESSOR	1	1	2	5	5	1	2
INSTRUCTOR							

TABLE 21 (CONTINUED)
 INSTRUCTIONAL STAFFING PATTERNS BY
 DEPARTMENT AND BY RANK, FALL 1968-1981

DEPARTMENT AND ACADEMIC RANK	1968	1971	1974	1977	1978	1980	1981
LECTURER			1		1	2	1
TOTAL	7	11	10	14	15	13	14
LIBRARY SCIENCE							
PROFESSOR		1		2	2	2	2
ASSOCIATE PROFESSOR				1	2	2	3
ASSISTANT PROFESSOR	2	4	3	2	4	4	5
INSTRUCTOR	1	2	2	2	1		
LECTURER			1	1			
TOTAL	3	7	6	8	9	8	10
MANAGEMENT AND MARKETING *							
PROFESSOR						1	1
ASSOCIATE PROFESSOR					1	2	3
ASSISTANT PROFESSOR					2	1	3
INSTRUCTOR					1		
LECTURER							1
TOTAL					4	4	8
MATHEMATICS							
PROFESSOR	2	2	2	2	2	1	1
ASSOCIATE PROFESSOR		1	1	2	2	4	4
ASSISTANT PROFESSOR	3	5	4	3	4	3	3
INSTRUCTOR	4	2	2	2	2	2	2
LECTURER			4	2	3	1	2
TOTAL	9	10	13	11	12	11	12
MODERN FOREIGN LANGUAGE							
PROFESSOR	3	3	3	4	4	2	2
ASSOCIATE PROFESSOR	1	2	1	4	5	5	6
ASSISTANT PROFESSOR	10	10	8	6	6	5	5
INSTRUCTOR	6	4	2				
LECTURER			4	1	2	1	
TOTAL	20	19	18	15	17	13	13
MUSIC							
PROFESSOR	1	2	2	2	2	1	1
ASSOCIATE PROFESSOR	3	3	2	3	3	5	5
ASSISTANT PROFESSOR	3	2	5	4	4	3	3
INSTRUCTOR	8	8	2	2	2	1	1
LECTURER			1	5	4	3	2
TOTAL	15	15	12	16	15	13	12

TABLE 21 (CONTINUED)

INSTRUCTIONAL STAFFING PATTERNS BY
DEPARTMENT AND BY RANK, FALL 1968-1981

DEPARTMENT AND ACADEMIC RANK	1968	1971	1974	1977	1978	1980	1981
NURSING							
PROFESSOR							
ASSOCIATE PROFESSOR	1	1	1	1	2	2	2
ASSISTANT PROFESSOR	4	7	7	7	4	4	7
INSTRUCTOR	1		2	1	3	3	4
LECTURER			1	5	6	5	2
TOTAL	6	8	11	14	15	14	15
PHILOSOPHY							
PROFESSOR	1	1					
ASSOCIATE PROFESSOR			1	1	1	1	1
ASSISTANT PROFESSOR		1	1	1	1	1	1
INSTRUCTOR	1						
LECTURER							
TOTAL	2	2	2	2	2	2	2
PHYSICAL EDUCATION							
PROFESSOR	2	2	3	2	2	2	2
ASSOCIATE PROFESSOR		2	2	3	2	1	2
ASSISTANT PROFESSOR	7	8	8	9	9	9	10
INSTRUCTOR	8	6	5	3	3	2	2
LECTURER			3	1		2	4
TOTAL	17	18	21	18	16	16	20
PHYSICS							
PROFESSOR		1	3	3	3	3	2
ASSOCIATE PROFESSOR	2	1	1	1	1	1	1
ASSISTANT PROFESSOR	1	1	1				
INSTRUCTOR	1						
LECTURER				3	3	2	1
TOTAL	4	3	5	7	7	6	4
POLITICAL SCIENCE							
PROFESSOR		1	2	1	1	2	2
ASSOCIATE PROFESSOR		1	1	2	2	3	4
ASSISTANT PROFESSOR	1	4	3	5	5	3	4
INSTRUCTOR	2	4	1			1	1
LECTURER			1	10	6	3	2
TOTAL	3	10	8	18	14	12	13
PSYCHOLOGY							

TABLE 21 (CONTINUED)

INSTRUCTIONAL STAFFING PATTERNS BY
DEPARTMENT AND BY RANK, FALL 1968-1981

DEPARTMENT AND ACADEMIC RANK	1968	1971	1974	1977	1978	1980	1981
PROFESSOR	2	1	1				
ASSOCIATE PROFESSOR		2	1	3	3	4	3
ASSISTANT PROFESSOR	1	1			1		
INSTRUCTOR	4	2	2			2	1
LECTURER			3	2	2	3	
TOTAL	7	6	7	5	6	9	4
<u>SOCIOLOGY</u>							
PROFESSOR	5	4	2	1	1	1	1
ASSOCIATE PROFESSOR					1	3	3
ASSISTANT PROFESSOR		2	4	4	5	3	4
INSTRUCTOR	4	4	2				
LECTURER			2		4	5	1
TOTAL	9	10	10	5	11	12	9
<u>GRAND TOTAL BY ACADEMIC YEAR</u>	254	291	283	327	311	301	299
<u>SUMMARY BY RANK AND YEAR</u>							
PROFESSOR	45	60	39	43	39	44	46
ASSOCIATE PROFESSOR	20	41	48	68	73	85	93
ASSISTANT PROFESSOR	73	85	81	82	80	71	86
INSTRUCTOR	108	105	60	38	38	40	30
LECTURER	8		55	96	81	61	44
GRAND TOTAL	254	291	283	327	311	301	299

* Prior to 1978, the School of Business included the departments of Accounting, Business Education, Business Administration and Economics. The School was reorganized in 1978 and faculty from Business Education and Business Administration were split into the departments of Business Education/Administrative Services and Management and Marketing.

TABLE 22

FULL-TIME EQUIVALENCY OF INSTRUCTIONAL STAFF,
 BY DEPARTMENT, BY RANK,
 FALL 1981

DEPARTMENT AND ACADEMIC RANK	NUMBER	NUMBER	FTE
	FULL-TIME	PART-TIME	
<u>ACADEMIC SKILLS CENTER</u>			
PROFESSOR			
ASSOCIATE PROFESSOR	2		2.00
ASSISTANT PROFESSOR	1		1.00
INSTRUCTOR	11		11.00
VISITING LECTURER	1	2	1.60
TOTAL	15	2	15.60
<u>ACCOUNTING</u>			
PROFESSOR			
ASSOCIATE PROFESSOR	1		1.00
ASSISTANT PROFESSOR	3		3.00
INSTRUCTOR			
VISITING LECTURER		1	.10
TOTAL	4	1	4.10
<u>ART</u>			
PROFESSOR	1		1.00
ASSOCIATE PROFESSOR	3		3.00
ASSISTANT PROFESSOR	4		4.00
INSTRUCTOR			
VISITING LECTURER		3	.90
TOTAL	8	3	8.90
<u>BIOLOGY</u>			
PROFESSOR	3		3.00
ASSOCIATE PROFESSOR	8		8.00
ASSISTANT PROFESSOR	2		2.00
INSTRUCTOR			
VISITING LECTURER		4	.80
TOTAL	13	4	13.80
<u>BUSINESS EDUCATION/ADMIN SERVICES</u>			
PROFESSOR	2		2.00
ASSOCIATE PROFESSOR	2		2.00
ASSISTANT PROFESSOR	4		4.00
INSTRUCTOR	2		2.00
VISITING LECTURER		1	.20

TABLE 22 (CONTINUED)

FULL-TIME EQUIVALENCY OF INSTRUCTIONAL STAFF,
BY DEPARTMENT, BY RANK,
FALL 1981

DEPARTMENT AND ACADEMIC RANK	NUMBER	NUMBER	FTE
	FULL-TIME	PART-TIME	
TOTAL	10	1	10.20
<u>CHEMISTRY</u>			
PROFESSOR	3		3.00
ASSOCIATE PROFESSOR	2		2.00
ASSISTANT PROFESSOR	1		1.00
INSTRUCTOR			
VISITING LECTURER		2	.45
TOTAL	6	2	6.45
<u>DRAMA</u>			
PROFESSOR	1		1.00
ASSOCIATE PROFESSOR			
ASSISTANT PROFESSOR	3		3.00
INSTRUCTOR			
VISITING LECTURER		1	.50
TOTAL	4	1	4.50
<u>ECONOMICS/FINANCE</u>			
PROFESSOR	1		1.00
ASSOCIATE PROFESSOR	3		3.00
ASSISTANT PROFESSOR	3		3.00
INSTRUCTOR			
VISITING LECTURER		1	.10
TOTAL	7	1	7.10
<u>EDUCATION</u>			
PROFESSOR	7		7.00
ASSOCIATE PROFESSOR	10		10.00
ASSISTANT PROFESSOR	5		5.00
INSTRUCTOR	1		1.00
VISITING LECTURER	1	1	1.50
TOTAL	24	1	24.50
<u>ENGLISH</u>			
PROFESSOR	4		4.00
ASSOCIATE PROFESSOR	8		8.00
ASSISTANT PROFESSOR	6		6.00
INSTRUCTOR	1		1.00

TABLE 22 (CONTINUED)

FULL-TIME EQUIVALENCY OF INSTRUCTIONAL STAFF,
 BY DEPARTMENT, BY RANK,
 FALL 1981

DEPARTMENT AND ACADEMIC RANK	NUMBER	NUMBER	FTE
	FULL-TIME	PART-TIME	
VISITING LECTURER		2	.70
TOTAL	19	2	19.70
<u>GEOGRAPHY</u>			
PROFESSOR	1		1.00
ASSOCIATE PROFESSOR	3		3.00
ASSISTANT PROFESSOR	1		1.00
INSTRUCTOR			
VISITING LECTURER			
TOTAL	5		5.00
<u>HEALTH EDUCATION</u>			
PROFESSOR	1		1.00
ASSOCIATE PROFESSOR	1		1.00
ASSISTANT PROFESSOR			
INSTRUCTOR	3		3.00
VISITING LECTURER		1	.10
TOTAL	5	1	5.10
<u>HISTORY/SOCIAL SCIENCE</u>			
PROFESSOR	3		3.00
ASSOCIATE PROFESSOR	4		4.00
ASSISTANT PROFESSOR	1		1.00
INSTRUCTOR	1		1.00
VISITING LECTURER	2	4	3.80
TOTAL	11	4	12.80
<u>HOME ECONOMICS</u>			
PROFESSOR			
ASSOCIATE PROFESSOR	3		3.00
ASSISTANT PROFESSOR	5		5.00
INSTRUCTOR		1	.60
VISITING LECTURER		1	8.60
TOTAL	8	1	8.60
<u>LAW</u>			
PROFESSOR	5		5.00
ASSOCIATE PROFESSOR	6		6.00
ASSISTANT PROFESSOR	2		2.00

TABLE 22 (CONTINUED)

FULL-TIME EQUIVALENCY OF INSTRUCTIONAL STAFF,
BY DEPARTMENT, BY RANK,
FALL 1981

DEPARTMENT AND ACADEMIC RANK	NUMBER	NUMBER	FTE
	FULL-TIME	PART-TIME	
INSTRUCTOR			
VISITING LECTURER		1	.10
TOTAL	13	1	13.10
<u>LIBRARY SCIENCE</u>			
PROFESSOR	2		2.00
ASSOCIATE PROFESSOR	3		3.00
ASSISTANT PROFESSOR	5		5.00
INSTRUCTOR			
VISITING LECTURER			
TOTAL	10		10.00
<u>MARKETING AND MANAGEMENT</u>			
PROFESSOR	1		1.00
ASSOCIATE PROFESSOR	3		3.00
ASSISTANT PROFESSOR	3		3.00
INSTRUCTOR			
VISITING LECTURER		1	.10
TOTAL	7	1	7.10
<u>MATHEMATICS</u>			
PROFESSOR	1		1.00
ASSOCIATE PROFESSOR	4		4.00
ASSISTANT PROFESSOR	3		3.00
INSTRUCTOR	2		2.00
VISITING LECTURER	2		2.00
TOTAL	12		12.00
<u>MODERN FOREIGN LANGUAGE</u>			
PROFESSOR	2		2.00
ASSOCIATE PROFESSOR	6		6.00
ASSISTANT PROFESSOR	5		5.00
INSTRUCTOR			
VISITING LECTURER			
TOTAL	13		13.00
<u>MUSIC</u>			
PROFESSOR	1		1.00
ASSOCIATE PROFESSOR	5		5.00

TABLE 22 (CONTINUED)
 FULL-TIME EQUIVALENCY OF INSTRUCTIONAL STAFF,
 BY DEPARTMENT, BY RANK,
 FALL 1981

DEPARTMENT AND ACADEMIC RANK	NUMBER	NUMBER	FTE
	FULL-TIME	PART-TIME	
ASSISTANT PROFESSOR	3		3.00
INSTRUCTOR	1		1.00
VISITING LECTURER	1	1	1.50
TOTAL	11	1	11.50
<u>NURSING</u>			
PROFESSOR			
ASSOCIATE PROFESSOR	2		2.00
ASSISTANT PROFESSOR	7		7.00
INSTRUCTOR	4		4.00
VISITING LECTURER		2	.20
TOTAL	13	2	13.20
<u>PHILOSOPHY</u>			
PROFESSOR			
ASSOCIATE PROFESSOR	1		1.00
ASSISTANT PROFESSOR	1		1.00
INSTRUCTOR			
VISITING LECTURER			
TOTAL	2		2.00
<u>PHYSICAL EDUCATION</u>			
PROFESSOR	2		2.00
ASSOCIATE PROFESSOR	2		2.00
ASSISTANT PROFESSOR	10		10.00
INSTRUCTOR	2		2.00
VISITING LECTURER	2	2	2.80
TOTAL	18	2	18.80
<u>PHYSICS</u>			
PROFESSOR	2		2.00
ASSOCIATE PROFESSOR	1		1.00
ASSISTANT PROFESSOR			
INSTRUCTOR			
VISITING LECTURER	1		1.00
TOTAL	4		4.00
<u>POLITICAL SCIENCE</u>			
PROFESSOR	2		2.00

TABLE 22 (CONTINUED)

FULL-TIME EQUIVALENCY OF INSTRUCTIONAL STAFF,
BY DEPARTMENT, BY RANK,
FALL 1981

DEPARTMENT AND ACADEMIC RANK	NUMBER	NUMBER	FTE
	FULL-TIME	PART-TIME	
ASSOCIATE PROFESSOR	4		4.00
ASSISTANT PROFESSOR	4		4.00
INSTRUCTOR	1		1.00
VISITING LECTURER		2	.50
TOTAL	11	2	11.50
<u>PSYCHOLOGY</u>			
PROFESSOR			
ASSOCIATE PROFESSOR	3		3.00
ASSISTANT PROFESSOR			
INSTRUCTOR	1		1.00
VISITING LECTURER			
TOTAL	4		4.00
<u>SOCIOLOGY</u>			
PROFESSOR	1		1.00
ASSOCIATE PROFESSOR	3		3.00
ASSISTANT PROFESSOR	4		4.00
INSTRUCTOR		1	.50
VISITING LECTURER		1	.50
TOTAL	8	1	8.50

FULL-TIME INSTRUCTIONAL FACULTY

<u>Table</u>		<u>Page</u>
23	Highest Earned Degree by Department, Fall 1968-81	75
24	Tenure by Department, Fall 1981	79
25	Tenure by Rank and Sex, Fall 1974-1981	81
26	Department and Academic Rank by Race and Sex, Fall 1981	82
27	Mean Salaries of Professors by Race and Sex, 1974-1981	89
28	Mean Salaries of Professors by Race and Sex, 1974-1981	90
29	Mean Salaries of Associate Professors by Race and Sex, 1974-1981	91
30	Mean Salaries of Assistant Professors by Race and Sex, 1974-1981	92
31	Mean Salaries of Instructors by Race and Sex, 1974-1981	93
32	Summary: Mean Salaries by Rank, by Race, and by Sex, Fall 1981	94

TABLE 23

HIGHEST EARNED DEGREE FOR FULL-TIME FACULTY
BY DEPARTMENT, FALL 1968-1981

DEPARTMENT AND HIGHEST DEGREE	1968	1971	1974	1977	1978	1980	1981
ACADEMIC SKILLS CENTER							
DOCTOR'S				2	1	1	2
MASTER'S			7	15	12	18	12
BACHELOR'S			2	2	2	2	1
ACCOUNTING							
DOCTOR'S					2		1
MASTER'S					4	3	3
BACHELOR'S						1	1
ART							
DOCTOR'S			1	2	2	2	2
MASTER'S	5	7	6	6	7	8	6
BACHELOR'S	1						
BIOLOGY							
DOCTOR'S	5	8	9	10	11	10	13
MASTER'S	10	8	3	5	4	1	
BACHELOR'S	1						
BUSINESS EDUCATION/ADMIN SERVICES							
DOCTOR'S					2	3	6
MASTER'S					3	3	4
BACHELOR'S					1		
CHEMISTRY							
DOCTOR'S	4	5	4	5	5	6	5
MASTER'S	1	2	2	1	1	1	1
BACHELOR'S							
DRAMA							
DOCTOR'S		1	1	1	1	1	1
MASTER'S	3	4	4	5	4	4	3
BACHELOR'S	1						
ECONOMICS/FINANCE							
DOCTOR'S					2	5	4
MASTER'S					6	5	3
BACHELOR'S							
EDUCATION							
DOCTOR'S	17	24	15	17	13	14	18
MASTER'S	7	11	7	13	11	8	6
BACHELOR'S							1
ENGLISH							
DOCTOR'S	7	8	7	11	11	10	12
MASTER'S	24	21	15	15	13	8	7
BACHELOR'S			1				
GEOGRAPHY							
DOCTOR'S	2	1	2	3	3	3	4

TABLE 23 (CONTINUED)

HIGHEST EARNED DEGREE FOR FULL-TIME FACULTY
BY DEPARTMENT, FALL 1968-1981

DEPARTMENT AND HIGHEST DEGREE	1968	1971	1974	1977	1978	1980	1981
MASTER'S	3	4	2	2	2	2	1
BACHELOR'S						1	
HEALTH EDUCATION							
DOCTOR'S	2	2	1	1	1	1	2
MASTER'S	6	8	3	5	5	5	3
BACHELOR'S				2	1		
HISTORY/SOCIAL SCIENCE							
DOCTOR'S	4	4	5	6	6	6	7
MASTER'S	11	10	6	7	8	7	4
BACHELOR'S							
HOME ECONOMICS							
DOCTOR'S	2	3	4	4	4	5	5
MASTER'S	6	7	6	6	5	3	3
BACHELOR'S							
LAW							
FIRST PROFESSIONAL	7	3	11	15	15	11	13
LIBRARY SCIENCE							
DOCTOR'S		1		5	4	4	5
MASTER'S	3	6	6	4	5	4	5
BACHELOR'S							
MARKETING AND MANAGEMENT							
DOCTOR'S					1	3	5
MASTER'S					3	1	2
BACHELOR'S							
MATHEMATICS							
DOCTOR'S	2	3	4	4	5	5	5
MASTER'S	7	9	5	6	5	5	7
BACHELOR'S							
MODERN FOREIGN LANGUAGE							
DOCTOR'S	8	4	4	9	10	7	7
MASTER'S	13	14	11	7	7	6	6
BACHELOR'S		1					
MUSIC							
DOCTOR'S	4	5	4	5	5	4	6
MASTER'S	10	9	5	8	8	5	4
BACHELOR'S	1	1	2	1	1	2	1
NURSING							
DOCTOR'S	1			1	1	1	1
MASTER'S	5	8	8	11	11	9	12
BACHELOR'S			2	1	2		
PHILOSOPHY							
DOCTOR'S	1	1	1	1	1	1	1

TABLE 23 (CONTINUED)

HIGHEST EARNED DEGREE FOR FULL-TIME FACULTY
BY DEPARTMENT, FALL 1968-1981

DEPARTMENT AND HIGHEST DEGREE	1968	1971	1974	1977	1978	1980	1981
MASTER'S	1	1					
BACHELOR'S			1	1	1	1	1
PHYSICAL EDUCATION							
DOCTOR'S	3	4	4	5	4	3	4
MASTER'S	13	14	14	12	12	11	13
BACHELOR'S						1	1
PHYSICS							
DOCTOR'S	2	3	4	6	6	5	4
MASTER'S	1						
BACHELOR'S							
POLITICAL SCIENCE							
DOCTOR'S		2	2	6	6	4	7
MASTER'S	3	6	5	10	7	5	4
BACHELOR'S							
PSYCHOLOGY							
DOCTOR'S	4	3	2	3	3	4	3
MASTER'S	4	3	2	2	2	2	1
BACHELOR'S							
SOCIOLOGY							
DOCTOR'S							4
MASTER'S	6	4	2	2	2	5	4
BACHELOR'S	4	6	5	5	7	4	

TENURE FOR FULL-TIME FACULTY BY DEPARTMENT, FALL 1981

TABLE 23.1

SUMMARY : HIGHEST EARNED DEGREE FOR FULL-TIME FACULTY BY DEPARTMENT

DEGREE	1968	1971	1974	1977	1978	1980	1981
DOCTOR'S	84	103	90	133	134	135	134
%	34.0	36.5	38.0	42.8	45.2	47.7	50.5
MASTER'S	159	177	135	169	154	129	114
%	64.4	62.8	57.0	54.3	52.0	49.2	43.0
BACHELOR'S	4	2	12	9	8	8	4
%	1.6	1.7	5.1	2.9	2.7	3.1	1.5
FIRST PROF.							13
%							5.0
GRAND TOTAL	247	282	237	311	296	262	265
%	100.0	100.0	100.0	100.0	100.0	100.0	100.0

TABLE 24

TENURE FOR FULL-TIME FACULTY BY DEPARTMENT, FALL 1981

DEPARTMENT	ON		NOT ON	GRAND
	TENURED	TENURE TRACK	TENURE TRACK	TOTAL
ACADEMIC SKILLS CENTER		14	1	15
%		82.4	17.6	100.0
ACCOUNTING	1	3		4
%	25.0	75.0		100.0
ART	4	4		8
%	50.0	50.0		100.00
BIOLOGY	6	7		13
%	46.2	53.8		100.00
BUSINESS EDUCATION/ADMIN SERVICES	2	8		10
%	20.0	80.0		100.0
CHEMISTRY	5	1		6
%	83.3	16.7		100.0
DRAMA	1	3		4
%	25.0	75.0		100.0
ECONOMICS/FINANCE	5	2		7
%	71.4	28.6		100.0
EDUCATION	13	10	1	24
%	54.2	41.6	4.2	100.0
ENGLISH	14	5		19
%	73.7	26.3		100.0
GEOGRAPHY	3	2		5
%	60.0	40.0		100.0
HEALTH EDUCATION	3	2		5
%	60.0	40.0		100.0
HISTORY/SOCIAL SCIENCE	5	4	2	11
%	45.5	36.4	18.1	100.0
HOME ECONOMICS	3	4	1	8
%	37.5	50.0	12.5	100.0
LAW	5	8		13
%	38.5	61.5		100.0
LIBRARY SCIENCE	3	7		10
%	30.0	70.0		100.0
MARKETING AND MANAGEMENT		7		7
%		100.0		100.0
MATHEMATICS	8	2	2	12
%	66.7	16.6	16.6	100.0
MODERN FOREIGN LANGUAGE	12	1		13
%	92.3	7.7		100.0
MUSIC	9	1	1	11
%	81.8	9.1	9.1	100.0
NURSING	2	11		13

TABLE 24 (CONTINUED)

TENURE FOR FULL-TIME FACULTY BY DEPARTMENT, FALL 1981

DEPARTMENT	ON		NOT ON	GRAND
	TENURED	TENURE TRACK	TENURE TRACK	TOTAL
%	15.4	84.6		100.0
PHILOSOPHY	2			2
%	100.0			100.0
PHYSICAL EDUCATION	12	4	2	18
%	63.2	21.0	15.8	100.0
PHYSICS	3		1	4
%	75.0		25.0	100.0
POLITICAL SCIENCE	5	5	1	11
%	45.5	45.5	9.0	100.0
PSYCHOLOGY	2	2		4
%	50.0	50.0		100.0
SOCIOLOGY	3	4	1	8
%	37.5	50.0	12.5	100.0
SUMMARY	131	121	13	265
%	49.4	45.7	4.9	100.0

Note: Data included in this table is for 9-month instructional faculty only. Those on leave are omitted.

TABLE 25

TENURE FOR FULL-TIME FACULTY BY RANK AND SEX
FALL 1974-1981

ACADEMIC RANK AND YEAR	MALES			FEMALES		
	N	WITH TENURE	% WITH TENURE	N	WITH TENURE	% WITH TENURE
1974						
PROFESSOR	24	22	91.7	9	9	100.0
ASSOCIATE PROFESSOR	32	19	59.4	18	12	66.7
ASSISTANT PROFESSOR	42	25	59.5	31	22	71.0
INSTRUCTOR	15	2	13.3	40	11	27.5
LECTURER	17			12		
TOTAL	130	68	52.3	108	54	50.0
1977						
PROFESSOR	31	23	74.2	11	9	81.9
ASSOCIATE PROFESSOR	41	20	48.7	24	16	66.7
ASSISTANT PROFESSOR	45	26	57.8	38	24	63.2
INSTRUCTOR	13	2	15.4	27	8	29.6
LECTURER	26			23		
TOTAL	156	71	45.5	123	57	46.3
1978						
PROFESSOR	22	17	77.2	11	11	100.0
ASSOCIATE PROFESSOR	40	19	47.5	23	14	60.8
ASSISTANT PROFESSOR	41	21	51.2	27	18	66.7
INSTRUCTOR	10	2	.2	25	7	.3
LECTURER	22			21		
TOTAL	135	59	43.7	107	50	46.7
1980						
PROFESSOR	28	24	85.7	9	9	100.0
ASSOCIATE PROFESSOR	52	21	40.4	27	15	55.6
ASSISTANT PROFESSOR	37	23	62.2	26	17	65.4
INSTRUCTOR	6	1	16.7	25	7	28.0
LECTURER	6			8		
TOTAL	129	69	53.5	95	48	50.5
1981						
PROFESSOR	29	26	89.6	11	11	100.0
ASSOCIATE PROFESSOR	56	24	42.8	29	16	55.2
ASSISTANT PROFESSOR	37	20	54.0	37	14	37.8
INSTRUCTOR	6	1	16.7	22	7	31.8
LECTURER	5			5		
TOTAL	133	71	53.4	104	48	46.2

Note: Data included in this table is for 9-month instructional faculty only.
Those on leave are omitted.

TABLE 26 (CONTINUED)

DEPARTMENT AND ACADEMIC RANK BY RACE
AND SEX FOR FULL-TIME FACULTY, FALL 1981

DEPARTMENT AND ACADEMIC RANK	BLACK			WHITE			OTHER			GRAND
	MEN	WOMEN	TOTAL	MEN	WOMEN	TOTAL	MEN	WOMEN	TOTAL	TOTAL
<u>ACADEMIC SKILLS CENTER</u>										
PROFESSOR										
ASSOCIATE PROFESSOR				2		2				2
ASSISTANT PROFESSOR		1	1							1
INSTRUCTOR	1	10	11							11
VISITING LECTURER					1	1				1
TOTAL	1	11	12	2	1	3				15
<u>ACCOUNTING</u>										
PROFESSOR										
ASSOCIATE PROFESSOR							1		1	1
ASSISTANT PROFESSOR	2	1	3							3
INSTRUCTOR										
VISITING LECTURER										
TOTAL	2	1	3				1		1	4
<u>ART</u>										
PROFESSOR				1		1				1
ASSOCIATE PROFESSOR		1	1	1		1	1		1	3
ASSISTANT PROFESSOR	2	1	3		1	1				4
INSTRUCTOR										
VISITING LECTURER										
TOTAL	2	2	4	2	1	3	1		1	8
<u>BIOLOGY</u>										
PROFESSOR	2		2		1	1				3
ASSOCIATE PROFESSOR	5	1	6		1	1	1		1	8
ASSISTANT PROFESSOR		2	2							2
INSTRUCTOR										
VISITING LECTURER										
TOTAL	7	3	10		2	2	1		1	13
<u>BUSINESS EDUCATION/ADMIN SERVICES</u>										
PROFESSOR		1	1	1		1				2
ASSOCIATE PROFESSOR		1	1		1	1				2
ASSISTANT PROFESSOR	1	2	3		1	1				4
INSTRUCTOR		2	2							2
VISITING LECTURER										
TOTAL	1	6	7	1	2	3				10

TABLE 26

DEPARTMENT AND ACADEMIC RANK BY RACE
AND SEX FOR FULL-TIME FACULTY, FALL 1981

DEPARTMENT AND ACADEMIC RANK	BLACK			WHITE			OTHER			GRAND
	MEN	WOMEN	TOTAL	MEN	WOMEN	TOTAL	MEN	WOMEN	TOTAL	TOTAL
<u>ACADEMIC SKILLS CENTER</u>										
PROFESSOR										
ASSOCIATE PROFESSOR				2		2				2
ASSISTANT PROFESSOR		1	1							1
INSTRUCTOR	1	10	11							11
VISITING LECTURER					1	1				1
TOTAL	1	11	12	2	1	3				15
<u>ACCOUNTING</u>										
PROFESSOR										
ASSOCIATE PROFESSOR							1		1	1
ASSISTANT PROFESSOR	2	1	3							3
INSTRUCTOR										
VISITING LECTURER										
TOTAL	2	1	3				1		1	4
<u>ART</u>										
PROFESSOR				1		1				1
ASSOCIATE PROFESSOR		1	1	1		1	1		1	3
ASSISTANT PROFESSOR	2	1	3		1	1				4
INSTRUCTOR										
VISITING LECTURER										
TOTAL	2	2	4	2	1	3	1		1	8
<u>BIOLOGY</u>										
PROFESSOR	2		2		1	1				3
ASSOCIATE PROFESSOR	5	1	6		1	1	1		1	8
ASSISTANT PROFESSOR		2	2							2
INSTRUCTOR										
VISITING LECTURER										
TOTAL	7	3	10		2	2	1		1	13
<u>BUSINESS EDUCATION/ADMIN SERVICES</u>										
PROFESSOR		1	1	1		1				2
ASSOCIATE PROFESSOR		1	1		1	1				2
ASSISTANT PROFESSOR	1	2	3		1	1				4
INSTRUCTOR		2	2							2
VISITING LECTURER										
TOTAL	1	6	7	1	2	3				10

TABLE 26 (CONTINUED)

DEPARTMENT AND ACADEMIC RANK BY RACE
AND SEX FOR FULL-TIME FACULTY, FALL 1981

DEPARTMENT AND ACADEMIC RANK	BLACK			WHITE			OTHER			GRAND
	MEN	WOMEN	TOTAL	MEN	WOMEN	TOTAL	MEN	WOMEN	TOTAL	TOTAL
CHEMISTRY										
PROFESSOR	1		1	2		2				3
ASSOCIATE PROFESSOR	1		1				1		1	2
ASSISTANT PROFESSOR	1		1							1
INSTRUCTOR										
VISITING LECTURER										
TOTAL	3		3	2		2	1		1	6
DRAMA										
PROFESSOR				1		1				1
ASSOCIATE PROFESSOR										
ASSISTANT PROFESSOR	1	1	2		1	1				3
INSTRUCTOR										
VISITING LECTURER										
TOTAL	1	1	2	1	1	2				4
ECONOMICS										
PROFESSOR	1		1							1
ASSOCIATE PROFESSOR				3		3				3
ASSISTANT PROFESSOR	2		2	1		1				3
INSTRUCTOR										
VISITING LECTURER										
TOTAL	3		3	4		4				7
EDUCATION										
PROFESSOR	2	1	3	2	1	3	1		1	7
ASSOCIATE PROFESSOR	1	2	3	2	5	7				10
ASSISTANT PROFESSOR	4	1	5							5
INSTRUCTOR		1	1							1
VISITING LECTURER		1	1							1
TOTAL	7	6	13	4	6	10	1		1	24
ENGLISH										
PROFESSOR		1	1	1	2	3				4
ASSOCIATE PROFESSOR	1	3	4	1	3	4				8
ASSISTANT PROFESSOR	2	2	4	2		2				6
INSTRUCTOR		1	1							1
VISITING LECTURER										
TOTAL	3	7	10	4	5	9				19

TABLE 26 (CONTINUED)

DEPARTMENT AND ACADEMIC RANK BY RACE
AND SEX FOR FULL-TIME FACULTY, FALL 1981

DEPARTMENT AND ACADEMIC RANK	BLACK			WHITE			OTHER			GRAND
	MEN	WOMEN	TOTAL	MEN	WOMEN	TOTAL	MEN	WOMEN	TOTAL	TOTAL
GEOGRAPHY										
PROFESSOR	1		1							1
ASSOCIATE PROFESSOR	2		2	1		1				3
ASSISTANT PROFESSOR	1		1							1
INSTRUCTOR										
VISITING LECTURER										
TOTAL	4		4	1		1				5
HEALTH EDUCATION										
PROFESSOR	1		1							1
ASSOCIATE PROFESSOR	1		1							1
ASSISTANT PROFESSOR										
INSTRUCTOR		2	2	1		1				3
VISITING LECTURER										
TOTAL	2	2	4	1		1				5
HISTORY/SOCIAL SCIENCE										
PROFESSOR	2	1	3							3
ASSOCIATE PROFESSOR	2	1	3		1	1				4
ASSISTANT PROFESSOR	1		1							1
INSTRUCTOR	1		1							1
VISITING LECTURER		2	2							2
TOTAL	6	4	10		1	1				11
HOME ECONOMICS										
PROFESSOR										
ASSOCIATE PROFESSOR	1	2	3							3
ASSISTANT PROFESSOR	1	4	5							5
INSTRUCTOR										
VISITING LECTURER										
TOTAL	2	6	8							8
LAW										
PROFESSOR	1		1	3	1	4				5
ASSOCIATE PROFESSOR	3		3	2	1	3				6
ASSISTANT PROFESSOR	2		2							2
INSTRUCTOR										
VISITING LECTURER										
TOTAL	6		6	5	2	7				13

TABLE 26 (CONTINUED)

DEPARTMENT AND ACADEMIC RANK BY RACE
AND SEX FOR FULL-TIME FACULTY, FALL 1981

DEPARTMENT AND ACADEMIC RANK	BLACK			WHITE			OTHER			GRAND
	MEN	WOMEN	TOTAL	MEN	WOMEN	TOTAL	MEN	WOMEN	TOTAL	TOTAL
<u>LIBRARY SCIENCE</u>										
PROFESSOR	1		1	1		1				2
ASSOCIATE PROFESSOR	1	1	2	1		1				3
ASSISTANT PROFESSOR		5	5							5
INSTRUCTOR										
VISITING LECTURER										
TOTAL	2	6	8	2		2				10
<u>MARKETING AND MANAGEMENT</u>										
PROFESSOR							1		1	1
ASSOCIATE PROFESSOR	1		1	2		2				3
ASSISTANT PROFESSOR				1		1	1	1	2	3
INSTRUCTOR										
VISITING LECTURER										
TOTAL	1		1	3		3	2	1	3	7
<u>MATHEMATICS</u>										
PROFESSOR	1		1							1
ASSOCIATE PROFESSOR	1	1	2	2		2				4
ASSISTANT PROFESSOR	3		3							3
INSTRUCTOR		1	1		1	1				2
VISITING LECTURER	1		1	1		1				2
TOTAL	6	2	8	3	1	4				12
<u>MODERN FOREIGN LANGUAGE</u>										
PROFESSOR	1		1		1	1				2
ASSOCIATE PROFESSOR	1		1	2	1	3	1	1	2	6
ASSISTANT PROFESSOR	1		1	1	3	4				5
INSTRUCTOR										
VISITING LECTURER										
TOTAL	3		3	3	5	8	1	1	2	13
<u>MUSIC</u>										
PROFESSOR					1	1				1
ASSOCIATE PROFESSOR	2	1	3	1	1	2				5
ASSISTANT PROFESSOR	2	1	3							3
INSTRUCTOR		1	1							1
VISITING LECTURER	1		1							1
TOTAL	5	3	8	1	2	3				11

TABLE 26 (CONTINUED)

DEPARTMENT AND ACADEMIC RANK BY RACE
AND SEX FOR FULL-TIME FACULTY, FALL 1981

DEPARTMENT AND ACADEMIC RANK	BLACK			WHITE			OTHER			GRAND
	MEN	WOMEN	TOTAL	MEN	WOMEN	TOTAL	MEN	WOMEN	TOTAL	TOTAL
NURSING										
PROFESSOR										
ASSOCIATE PROFESSOR		2	2							2
ASSISTANT PROFESSOR		4	4		3	3				7
INSTRUCTOR		1	1	1	2	3				4
VISITING LECTURER										
TOTAL		7	7	1	5	6				13
PHILOSOPHY										
PROFESSOR										
ASSOCIATE PROFESSOR				1		1				1
ASSISTANT PROFESSOR				1		1				1
INSTRUCTOR										
VISITING LECTURER										
TOTAL				2		2				2
PHYSICAL EDUCATION										
PROFESSOR	2		2							2
ASSOCIATE PROFESSOR	2		2							2
ASSISTANT PROFESSOR	5	4	9		1	1				10
INSTRUCTOR	2		2							2
VISITING LECTURER	2		2							2
TOTAL	13	4	17		1	1				18
PHYSICS										
PROFESSOR				2		2				2
ASSOCIATE PROFESSOR				1		1				1
ASSISTANT PROFESSOR										
INSTRUCTOR									1	1
VISITING LECTURER							1		1	1
TOTAL				3		3	1		1	4
POLITICAL SCIENCE										
PROFESSOR	1		1				1		1	2
ASSOCIATE PROFESSOR				3		3	1		1	4
ASSISTANT PROFESSOR	1		1	2	1	3				4
INSTRUCTOR				1		1				1
VISITING LECTURER										
TOTAL	2		2	6	1	7	2		2	11

TABLE 26 (CONTINUED)

DEPARTMENT AND ACADEMIC RANK BY RACE
AND SEX FOR FULL-TIME FACULTY, FALL 1981

DEPARTMENT AND ACADEMIC RANK	BLACK			WHITE			OTHER			GRAND
	MEN	WOMEN	TOTAL	MEN	WOMEN	TOTAL	MEN	WOMEN	TOTAL	TOTAL
PSYCHOLOGY										
PROFESSOR										3
ASSOCIATE PROFESSOR	2	1	3							
ASSISTANT PROFESSOR										1
INSTRUCTOR		1	1							
VISITING LECTURER										4
TOTAL	2	2	4							
SOCIOLOGY										
PROFESSOR	1		1							1
ASSOCIATE PROFESSOR	1		1	2		2				3
ASSISTANT PROFESSOR	1	2	3	1		1				4
INSTRUCTOR										
VISITING LECTURER										8
TOTAL	3	2	5	3		3				

UNIVERSITY OF ALABAMA

TABLE 26.1

DEPARTMENT AND ACADEMIC RANK BY RACE
AND SEX FOR FULL-TIME FACULTY, FALL 1981

SUMMARY	BLACK			WHITE			OTHER			TOTAL		
	MALE	FEMALE	TOTAL	MALE	FEMALE	TOTAL	MALE	FEMALE	TOTAL	MALE	FEMALE	TOTAL
PROFESSOR	18	4	22	14	7	21	3		3	35	11	46
%	39.1	8.7	47.8	30.4	15.2	45.6	6.5		6.5	76.0	24.0	100.0
ASSOCIATE PROFESSOR	28	17	45	27	14	40	6	1	7	61	32	93
%	30.1	18.3	48.4	29.0	15.1	44.1	6.4	1.1	7.5	65.5	34.5	100.0
ASSISTANT PROFESSOR	33	31	64	9	11	20	1	1	2	43	43	86
%	38.3	36.0	74.3	10.5	12.8	23.3	1.2	1.2	2.4	50.0	50.0	100.0
INSTRUCTOR	4	20	24	3	3	6				7	23	30
%	13.3	66.7	80.0	10.0	10.0	20.0				23.3	76.7	100.0
LECTURER	4	3	7	1	1	2	1		1	6	4	10
%	40.0	30.0	70.0	10.0	10.0	20.0	10.0		10.0	60.0	40.0	100.0
GRAND TOTAL	87	75	162	53	36	89	11	2	13	152	113	265
%	32.8	28.3	61.1	20.0	13.6	33.6	4.3	.8	5.0	57.4	42.6	100.0

LIBRARY

TABLE 27

*MEAN SALARIES BY RANK, 1968-1981

YEAR	PROFESSOR	ASSOCIATE PROFESSOR	ASSISTANT PROFESSOR	INSTRUCTOR
1968	\$13,221	\$11,208	\$8,972	\$7,474
1969	14,326	12,119	9,595	8,045
1970	15,952	13,326	10,222	8,045
1971	16,663	13,837	10,878	9,078
1972	17,588	14,321	11,248	9,698
1973	18,306	14,842	11,855	9,734
1974	19,353	16,150	13,012	10,950
1975	19,187	15,600	12,937	10,922
1976	20,777	17,069	14,073	11,928
1977	22,641	18,222	15,057	12,790
1978	24,874	19,492	16,240	13,921
1979	26,956	20,656	17,305	14,199
1980	29,735	23,027	19,337	15,415
1981	30,514	24,411	20,718	17,825

* Table contains salary data based on nine and ten-month full-time instructional faculty only.

UNIVERSITY OF CALIFORNIA LIBRARY

TABLE 28

*MEAN SALARIES OF PROFESSORS BY RACE AND
SEX, 1974-1981

YEAR	BLACK		WHITE		OTHER	
	MEN	WOMEN	MEN	WOMEN	MEN	WOMEN
1974	\$20,235	\$19,093	\$19,054	\$16,925	\$18,025	
1975	20,037	19,421	18,754	17,617	18,250	
1976	21,788	20,953	20,140	19,160	19,475	
1977	23,381	22,418	22,842	21,388	20,531	
1978	25,330	25,267	24,229	23,534	25,916	
1979	28,052	27,011	26,521	25,321	25,508	
1980	30,879	31,545	28,834	28,059	29,539	
1981	32,066	31,019	30,257	27,988	29,287	

* Table contains salary data based on nine and ten-month full-time instructional faculty only.

LIBRARY

TABLE 29

*MEAN SALARIES OF ASSOCIATE PROFESSORS
BY RACE AND SEX, 1974-1981

YEAR	BLACK		WHITE		OTHER	
	MEN	WOMEN	MEN	WOMEN	MEN	WOMEN
1974	\$16,875	\$16,261	\$16,366	\$14,791	\$16,900	\$14,700
1975	16,053	16,567	15,620	14,923	16,800	14,700
1976	17,322	17,137	17,615	15,949	17,922	16,188
1977	18,528	17,974	18,748	17,314	17,918	17,240
1978	19,726	19,185	20,357	18,358	19,164	18,674
1979	21,128	20,545	21,598	19,100	19,409	20,208
1980	24,039	21,832	23,667	22,157	19,856	23,229
1981	25,272	23,420	24,877	23,439	23,528	

*Table contains salary data based on nine and ten-month full-time instructional faculty only.

TABLE 30

*MEAN SALARIES OF ASSISTANT PROFESSORS
BY RACE AND SEX, 1974-1981

YEAR	BLACK		WHITE		OTHER	
	MEN	WOMEN	MEN	WOMEN	MEN	WOMEN
1974	\$13,706	\$12,822	\$12,454	\$11,931		
1975	13,489	12,952	12,420	11,694		
1976	14,708	13,559	13,717	11,871	16,000	
1977	15,624	14,823	14,589	14,462	17,040	
1978	16,524	16,016	16,329	15,732	17,000	
1979	17,488	17,187	17,336	16,722	17,900	
1980	19,999	19,379	18,940	17,455	18,480	
1981	21,383	20,456	20,142	19,820		

*Table contains salary data based on nine and ten-month full-time instructional faculty only.

TABLE 32

** SUMMARY: MEAN SALARIES BY RANK, BY RACE
AND BY SEX, FALL 1981

ACADEMIC RANK	BLACK				WHITE				OTHER			
	MEN		WOMEN		MEN		WOMEN		MEN		WOMEN	
	N	MEAN	N	MEAN	N	MEAN	N	MEAN	N	MEAN	N	MEAN
PROFESSOR	14	\$32,066	4	\$31,019	14	\$30,257	7	\$27,988	2	\$29,287		
ASSOCIATE PROFESSOR	26	25,272	15	23,420	26	24,878	14	23,439	6	23,528	1*	
ASSISTANT PROFESSOR	30	21,384	30	20,457	8	20,142	11	19,820	1*		1*	
INSTRUCTOR	4	17,115	19	17,664	2	20,221	3	19,101			1*	

*Salaries have been omitted from cells with only one person.

**Salaries are for nine and ten-month full-time instructional faculty only. Those on leave are included.

LIBRARY OF THE UNIVERSITY OF MICHIGAN

FACULTY AND STAFF

<u>Table</u>		<u>Page</u>
33	Full-Time EPA and SPA by Occupational Activity Category, Race and Sex, Fall 1981	96
34	New Full-Time Employees by Race and Sex, Fall 1981	97
35	Retirements, Resignations and Dismissals of Full-Time Employees, Fall 1981	98
36	Promotions of Full-Time Employees, Fall 1981	99
37	Mean Salary by Occupational Activity Category, Race and Sex, 1981-82	100
38	Summary: Mean Salaries of Full-Time Staff by Occupational Activity Category, Fall 1981	101
39	Mean Salary of Selected Positions, Fall 1981	102

1981
 100
 101
 102
 103
 104
 105
 106
 107
 108
 109
 110
 111
 112
 113
 114
 115
 116
 117
 118
 119
 120

TABLE 33

FULL-TIME EPA AND SPA BY OCCUPATIONAL
ACTIVITY CATEGORY, RACE AND SEX,
FALL 1981

OCCUPATIONAL ACTIVITY CATEGORY	BLACK		WHITE		OTHER		TOTAL	
	MEN	WOMEN	MEN	WOMEN	MEN	WOMEN	MEN	WOMEN
EXECUTIVE, ADMINISTRATIVE & MANAGERIAL	25	9	2	2	1		28	11
NUMBER OF PERSONS ABOVE WITH ACADEMIC RANK	12	5	1	2	1		14	7
NUMBER OF PERSONS ABOVE WITH TENURE	9	3	1	1	1		11	4
INSTRUCTIONAL FACULTY (TENURED)	47	28	31	21	3	1	81	50
PROFESSORS	17	4	13	7	2		32	11
ASSOCIATE PROFESSORS	11	7	13	9	1	1	25	17
ASSISTANT PROFESSORS	18	11	5	4			23	15
INSTRUCTORS	1	6		1			1	7
LECTURERS								
INSTRUCTIONAL FACULTY (NON TENURED BUT ON TRACK)	35	42	21	14	6	2	62	58
PROFESSORS	1		1		1		3	
ASSOCIATE PROFESSORS	16	10	14	5	4		34	15
ASSISTANT PROFESSORS	15	18	3	7	1	1	19	26
INSTRUCTORS	3	14	3	2		1	6	17
LECTURERS								
INSTRUCTIONAL FACULTY (NOT ON TENURE TRACK)	1	1			1		2	1
PROFESSORS								
ASSOCIATE PROFESSORS					1		1	
ASSISTANT PROFESSORS								
INSTRUCTORS								
LECTURERS		1						1
OTHER FACULTY	1						1	
TEACHING & RESEARCH ASSISTANTS	18	26	1	5	1	3	20	34
PROFESSIONAL	17	169		1	1	1	18	171
SECRETARIAL & CLERICAL	21	25		1	1		22	26
TECHNICAL & PARAPROFESSIONAL	32	4	2				34	4
SKILLED CRAFTS	69	38	1	2			70	40
SERVICE & MAINTENANCE					14	7		
TOTAL	265	342	58	46	14	7	337	395

UNIVERSITY OF
 TEXAS AT
 AUSTIN
 1981

TABLE 34

NEW FULL-TIME EMPLOYEES BY RACE AND SEX,
FALL 1981

OCCUPATIONAL ACTIVITY CATEGORY	BLACK		WHITE		OTHER		TOTAL	
	MEN	WOMEN	MEN	WOMEN	MEN	WOMEN	MEN	WOMEN
EXECUTIVE, ADMINISTRATIVE & MANAGERIAL								
NUMBER OF PERSONS ABOVE WITH ACADEMIC RANK	2	1					2	1
NUMBER OF PERSONS ABOVE WITH TENURE	1	1					1	1
INSTRUCTIONAL FACULTY (TENURED)								
PROFESSORS								
ASSOCIATE PROFESSORS								
ASSISTANT PROFESSORS								
INSTRUCTORS								
LECTURERS								
INSTRUCTIONAL FACULTY (NON-TENURED BUT ON TRACK)								
PROFESSORS	3	6	5	2	2	1	10	9
ASSOCIATE PROFESSORS			2		2		4	
ASSISTANT PROFESSORS	3	6	2	2		1	5	9
INSTRUCTORS			1				1	
LECTURERS								
INSTRUCTIONAL FACULTY (NOT ON TENURE TRACK)								
PROFESSORS								
ASSOCIATE PROFESSORS								
ASSISTANT PROFESSORS								
INSTRUCTORS								
LECTURERS								
TEACHING & RESEARCH ASSISTANTS								
PROFESSIONAL	1		1	1			2	1
SECRETARIAL & CLERICAL	3	23				1	3	24
TECHNICAL & PARAPROFESSIONAL	1	2					1	2
SKILLED CRAFTS	2						2	
SERVICE & MAINTENANCE	8	2					8	2
TOTAL	20	34	6	3	2	2	28	39

TABLE 35

RETIREMENTS, RESIGNATIONS AND DISMISSALS
OF FULL-TIME EMPLOYEES, FALL 1981

OCCUPATIONAL ACTIVITY CATEGORY	BLACK		WHITE		OTHER		TOTAL	
	MEN	WOMEN	MEN	WOMEN	MEN	WOMEN	MEN	WOMEN
EXECUTIVE, ADMINISTRATIVE & MANAGERIAL	4	1	1				5	1
NUMBER OF PERSONS ABOVE WITH ACADEMIC RANK	4	1	1				5	1
NUMBER OF PERSONS ABOVE WITH TENURE	4	1	1				5	1
INSTRUCTIONAL FACULTY (TENURED)		2	2				2	2
PROFESSOR								
ASSOCIATE PROFESSOR			1				1	
ASSISTANT PROFESSOR		2	1				1	2
INSTRUCTOR								
LECTURER								
INSTRUCTIONAL FACULTY (NON-TENURED BUT ON TRACK)	3	2	2	3			5	5
PROFESSORS								
ASSOCIATE PROFESSORS			1	1			1	1
ASSISTANT PROFESSORS	1			1			1	1
INSTRUCTORS	2	2	1	1			3	3
LECTURERS								
INSTRUCTIONAL FACULTY (NOT ON TENURE TRACK)	1						1	
PROFESSORS								
ASSOCIATE PROFESSORS								
ASSISTANT PROFESSORS								
INSTRUCTORS								
LECTURERS								
OTHER FACULTY	1						1	
TEACHING & RESEARCH ASSISTANTS								
PROFESSIONAL	3	2	1				4	2
SECRETARIAL & CLERICAL								
TECHNICAL & PARAPROFESSIONAL								
SKILLED CRAFTS								
SERVICE & MAINTENANCE								
TOTAL	11	7	6	3			17	10

UNIVERSITY OF TEXAS AT AUSTIN
 178 24 81

TABLE 36

PROMOTIONS OF FULL-TIME EMPLOYEES,
FALL 1981

OCCUPATIONAL ACTIVITY CATEGORY	BLACK		WHITE		OTHER		TOTAL	
	MEN	WOMEN	MEN	WOMEN	MEN	WOMEN	MEN	WOMEN
EXECUTIVE, ADMINISTRATIVE & MANAGERIAL								
NUMBER OF PERSONS ABOVE WITH ACADEMIC RANK								
NUMBER OF PERSONS ABOVE WITH TENURE								
INSTRUCTIONAL FACULTY (TENURED)								
PROFESSORS		1	3	1			3	2
ASSOCIATE PROFESSORS		1	2	1			2	2
ASSISTANT PROFESSORS			1				1	
INSTRUCTORS								
LECTURERS								
INSTRUCTIONAL FACULTY (NON-TENURED BUT ON TRACK)								
PROFESSORS	1	3		1			1	4
ASSOCIATE PROFESSORS		1						1
ASSISTANT PROFESSORS		2		1				3
INSTRUCTORS	1						1	
LECTURERS								
INSTRUCTIONAL FACULTY (NOT ON TENURE TRACK)								
PROFESSORS								
ASSOCIATE PROFESSORS								
ASSISTANT PROFESSORS								
INSTRUCTORS								
LECTURERS								
TEACHING & RESEARCH ASSISTANTS								
PROFESSIONAL								
SECRETARIAL & CLERICAL								
TECHNICAL & PARAPROFESSIONAL								
SKILLED CRAFTS								
SERVICE & MAINTENANCE	1	4	3	2			4	6
TOTAL								

178
 21
 Y
 D
 4
 10

TABLE 38

SUMMARY: MEAN SALARIES OF FULL-TIME
STAFF BY OCCUPATIONAL ACTIVITY
CATEGORY, FALL 1981

OCCUPATIONAL ACTIVITY CATEGORY	NUMBER	MEAN
EXECUTIVE, ADMINISTRATIVE & MANAGERIAL	39	\$32,177
PROFESSIONAL	54	19,002
TECHNICAL & PARAPROFESSIONALS	48	13,726
CLERICAL & SECRETARIAL	189	11,379
SKILLED CRAFTS	38	13,685
SERVICES & MAINTENANCE	110	8,600

178
 21
 2
 1

TABLE 39

MEAN SALARY OF SELECTED POSITIONS,
FALL 1981

OCCUPATIONAL ACTIVITY CATEGORY	NUMBER	MEAN SALARY
EXECUTIVE OFFICERS	4	\$47,137
DEANS	5	43,706
DIRECTORS	34	28,523
CHAIRPERSONS	24	30,806

LIBRARY

TABLE 40

REVENUES, EXPENDITURES AND ASSETS FOR FISCAL YEAR, 1980-81

DESCRIPTION OF FINANCIAL STATISTICS

AMOUNT IN DOLLARS

RESOURCES

Table

Page

40	Revenues, Expenditures and Assets for Fiscal Year, 1979-1981	104
41	Current and Plant Funds for Fiscal Year, 1979-1981	105
42	Student Tuition, Fees and Charges for the 1981-1982 Academic Year Room and Board Plans for the Academic Year, 1981-1982	106
43	Library Components for 1981-1982	108

UNIVERSITY OF TEXAS AT AUSTIN

TABLE 40

REVENUES, EXPENDITURES AND ASSETS FOR
FISCAL YEAR, 1980-81

DESCRIPTION OF FINANCIAL STATISTICS	AMOUNT (IN DOLLARS)
CURRENT FUNDS REVENUES BY SOURCES	
TUITION & FEES	\$2,625,889
STATE	14,479,563
GOVERNMENT GRANTS & CONTRACTS	
FEDERAL, UNRESTRICTED	249,961
FEDERAL, RESTRICTED	1,939,224
STATE, UNRESTRICTED	3,403
STATE, RESTRICTED	212,006
LOCAL, UNRESTRICTED	
LOCAL, RESTRICTED	
PRIVATE GIFTS, GRANTS & CONTRACTS	
UNRESTRICTED	
RESTRICTED	132,232
ENDOWMENT INCOME	
UNRESTRICTED	15,574
RESTRICTED	61,155
SALES & SERVICES OF EDUCATIONAL ACTIVITIES	309,281
SALES & SERVICES OF AUXILIARY ENTERPRISES	4,378,531
SALES & SERVICES OF HOSPITALS	
OTHER SOURCES	5,787
INDEPENDENT OPERATIONS	
TOTAL CURRENT FUNDS REVENUE	24,412,606
CURRENT FUNDS EXPENDITURES & MANDATORY TRANSFER	
FUNCTION: EDUCATIONAL & GENERAL	
INSTRUCTION	10,406,060
RESEARCH	513,674
PUBLIC SERVICE	18,019
ACADEMIC SUPPORT (INCLUDING LIBRARIES)	2,466,504
STUDENT SERVICES	915,556
INSTITUTIONAL SUPPORT	2,151,965
OPERATION & MAINTENANCE OF PLANT	2,537,626
SCHOLARSHIPS & FELLOWSHIPS	
AWARDS FROM UNRESTRICTED FUNDS	291,224
AWARDS FROM RESTRICTED FUNDS	703,695
EDUCATIONAL & GENERAL MANDATORY TRANSFER	
AUXILIARY ENTERPRISES (INCLUDING MANDATORY TRANSFERS)	4,324,516
HOSPITALS (INCLUDING MANDATORY TRANSFERS)	
INDEPENDENT OPERATIONS (INCLUDING MANDATORY TRANSFERS)	
TOTAL CURRENT FUNDS EXPENDITURES & MANDATORY TRANSFERS	24,334,825
PHYSICAL PLANT ASSETS	
LAND	
BOOK VALUE AT BEGINNING OF YEAR	499,641
ADDITIONS DURING YEAR	
DEDUCTIONS DURING YEAR	
BOOK VALUE AT END OF YEAR	499,644
BUILDINGS	
BOOK VALUE AT BEGINNING OF YEAR	29,653,907
ADDITIONS DURING YEAR	4,183,000
DEDUCTIONS DURING YEAR	
BOOK VALUE AT END OF YEAR	33,836,907
EQUIPMENT	
BOOK VALUE AT BEGINNING OF YEAR	6,170,958
ADDITIONS DURING YEAR	562,476
DEDUCTIONS DURING YEAR	
BOOK VALUE AT END OF YEAR	\$6,733,434

UNIVERSITY OF TEXAS AT AUSTIN 1980-81

TABLE 41
CURRENT AND PLANT FUNDS FOR FISCAL YEAR
1980-81

ACTIVITY CLASSIFICATION	AMOUNT (IN DOLLARS)
INSTRUCTION	\$10,406,060
ORGANIZED RESEARCH	513,674
PUBLIC SERVICE	18,019
ACADEMIC SUPPORT	2,466,504
STUDENT SERVICES	915,556
INSTRUCTIONAL SUPPORT	2,151,965
PHYSICAL PLANT OPERATIONS	2,537,626
AUXILIARY & INDEPENDENT OPERATIONS	4,324,516
STUDENT FINANCIAL AID	1,000,905
MULTI-ACTIVITY	
TOTAL	\$24,334,825

LIBRARY

TABLE 42
STUDENT TUITION, FEES AND CHARGES
FOR THE 1981-82 ACADEMIC YEAR

CATEGORY	UNDERGRADUATE		GRADUATE	
	IN-STATE	OUT-OF-STATE	IN-STATE	OUT-OF-STATE
TUITION & ACADEMIC FEES	\$372.00	\$2,160.00	\$372.00	\$2,160.00
OTHER REQUIRED FEES			263.00	263.00
ATHLETIC FEE	70.00	70.00		
HEALTH SERVICES FEE	63.00	63.00		
CULTURAL SERIES	10.00	10.00		
STUDENT UNION	70.00	70.00		
GENERAL STUDENT ACTIVITY FEE	65.00	65.00		
DEBT SERVICES				
ACCIDENT & SICKNESS INSURANCE	32.25	32.25		
TOTAL TUITION & REEQUIRED FEES	\$682.25	\$2,470.25	\$635.00	\$2,423.00

UNIVERSITY OF ALABAMA

TABLE 42.1
 ROOM AND BOARD PLANS FOR THE ACADEMIC
 YEAR

	PER YEAR	PER YEAR
DORMITORY ROOM RENT	\$798.00	\$798.00
BOARD PLANS (7-DAY)	\$826.00	\$826.00

UNIVERSITY OF
 CALIFORNIA
 LIBRARY
 1984

TABLE 43
LIBRARY COMPONENTS, FALL 1981

LIBRARY COMPONENTS	AMOUNT
PERIODICALS & LIBRARY COLLECTIONS	
CURRENT PERIODICAL SUBSCRIPTIONS	3,093
LIBRARY COLLECTION	
BOOKSTOCK	
NUMBER OF VOLUMES	623,784
NUMBER OF TITLES (EXCLUDING DUPLICATE COPIES)	328,332
SEPARATE GOVERNMENT DOCUMENTS COLLECTION	
MICROFORMS-ALL TYPES	
NUMBER OF BOOK TITLES REPRESENTED BY MICROFORMS	24,118
NUMBER OF PERIODICAL TITLES REPRESENTED BY MICROFORM	221
NUMBER OF PHYSICAL UNITS OF MICROFORMS NOT REPORTED ABOVE	130,691
PERIODICALS & AUDIOVISUAL MATERIALS-NUMBER OF TITLES	22,844
ALL OTHER LIBRARY MATERIALS, INCLUDING UNBOUND NON-CURRENT	4,430
LIBRARY OPERATING EXPENDITURES	\$642,305
SALARIES & WAGES	168,485
FRINGE BENEFITS	
WAGES OF STUDENTS ON AN HOURLY BASIS, CHARGED TO THE LIBRARY	2,878
SUPPLIES & MATERIALS	
BOOKS	224,159
PERIODICALS	214,594
MICROFORMS	22,010
AUDIOVISUAL MATERIALS	4,488
ALL OTHER LIBRARY MATERIALS (EXCLUDING MICROFORMS)	4,651
BINDING & REBINDING	14,923
ALL OTHER OPERATING EXPENDITURES	23,593
TOTAL LIBRARY OPERATING EXPENDITURES	1,322,086

LIBRARY 148-371-4

APPENDIX

The data used in this book were abstracted from annual North Carolina Higher Education Data Survey forms (NCHED), The University of North Carolina Higher Education General Information Survey forms (HEGIS), and the Office for Civil Rights (OCR) reports. The sources of basic data for each section are listed below.

ENROLLMENT

- NCHED A-1.1 Resident Credit Enrollment, Fall 1968-1980
- OCR 2300-2.3 Fall Enrollment and Compliance Report of Institutions of Higher Education, 1976-1980
- NCHED A-1.6 Survey of Enrollment by Age, Fall 1975-1980
- NCHED A-1.3 "Home Base" of Students, Fall 1968-1980

ADMISSIONS

- OCR B1 Students in Institutions of Higher Education - Applications, Acceptances and Actual Enrollment, Fall 1980
- NCHED A-4 Admission Practices, Fall 1980
- NCHED A-1.2 New Undergraduate Transfer Students, Fall 1968-1980
- NCHED A-7 Student Retention Data Survey, Fall 1980

DEGREES CONFERRED

- HEGIS 2300-2.1 Degrees and Other Formal Awards Conferred, 1967/68-1980-81
- NTE Yearly Reports to the Education Department, 1972-1980

FINANCIAL AID

- NCHED A-10 Student Financial Aid Summary, Fall 1980
- OCR B3 Financial Assistance to Students in Institutions of Higher Education, Fall 1980

ALL INSTRUCTIONAL FACULTY

HEGIS 2300-3 Salaries, Tenure and Fringe Benefits of Full-Time
Instructional Faculty, 1968/69 - 1980-81

Separate Analyses done by the Office of Institutional
Studies

FULL-TIME INSTRUCTIONAL FACULTY

HEGIS 2300-3 Salaries, Tenure and Fringe Benefits of Full-Time
Instructional Faculty, 1968/69 - 1980-81

Separate Analyses done by the Office of Institutional
Studies

FACULTY AND STAFF

OCR A1A Employees in Institutions of Higher Education,
Fall 1980

OCR A1B New Employees in Institutions of Higher Education,
Fall 1980

OCR A3 Retirements, Resignations and Dismissals of Employees
in Institutions of Higher Education, Fall 1980

OCR A4 Promotions of Employees in Institutions of Higher
Education, Fall 1980

RESOURCES

NCHED A-11 Report on Sources and Uses of University Current
and Plant Funds, Fiscal Year 1979-80

HEGIS 2300-4 Financial Statistics of Institutions of Higher
Education for Fiscal Year Ending 1980

NCHED A-6 College and University Libraries, Fall 1980

UNIVERSITY OF
ARIZONA
LIBRARY
14831
-1



M E M O R A N D U M

TO: Officers and Administrative Staff
FROM: Nathaniel Felder *NF*
SUBJECT: NCCU 1981-82 Fact Book
DATE: May 11, 1982

Enclosed, please find the 1981-82 FACT BOOK published by the Office of Institutional Studies within the Office of Research, Evaluation, and Planning at NCCU. The data contained in the compilation reflects the official statistics that go out to external agencies.

Institutional Studies is the reporting office for all official statistical data about NCCU. This office does not, however, generate data but rather, receives data from various offices of origination. Therefore, the data in the FACT BOOK represents what has been given to this office from various source offices and falls within the parameters of the guidelines and definitions imposed by state and federal agencies to which the information is required to be reported. Your comments regarding format and/or content are welcome.